

anti- YES1-Specific antibody

Product Information

Catalog No.:	FNab09563
Size:	100µg
Form:	liquid
Purification:	Immunogen affinity purified
Purity:	≥95% as determined by SDS-PAGE
Host:	Rabbit
Clonality:	polyclonal
Clone ID:	None
IsoType:	IgG
Storage:	PBS with 0.02% sodium azide and 50% glycerol pH 7.3, -20°C for 12 months (Avoid repeated freeze / thaw cycles.)

Background

YES1, also named as p61-Yes and YES, belongs to the protein kinase superfamily, Tyr protein kinase family and SRC subfamily. It promotes infectivity of Neisseria gonorrhoeae in epithelial cells by phosphorylating MCP/CD46. YES1 catalyzes the reaction: ATP + a [protein]-L-tyrosine = ADP + a [protein]-L-tyrosine phosphate. The antibody is specific to YES1.

Immunogen information

Immunogen:	v-yes-1 Yamaguchi sarcoma viral oncogene homolog 1
Synonyms:	C yes, HsT441, P61 YES, Proto oncogene c Yes, Yes, YES1
Observed MW:	61 kDa
Uniprot ID :	P07947

Application

Reactivity:	Human, Mouse, Rat
Tested Application:	ELISA, WB, IHC, IP
Recommended dilution:	WB: 1:200-1:2000; IP: 1:200-1:1000; IHC: 1:20-1:200

Wuhan Fine Biotech Co., Ltd.

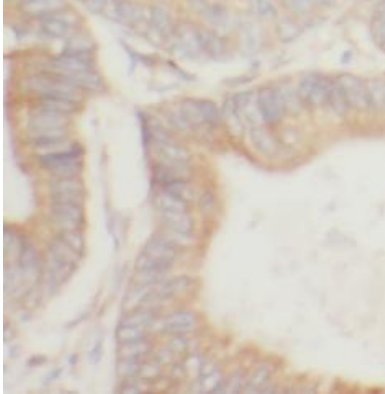
B9 Bld, High-Tech Medical Devices Park, No. 818 Gaoxin Ave. East Lake High-Tech Development Zone. Wuhan, Hubei, China(430206)

Tel : (0086)027-87384275

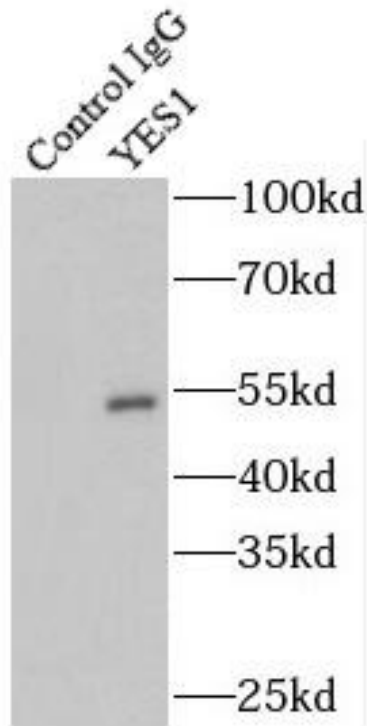
Fax: (0086)027-87800889

www.fn-test.com

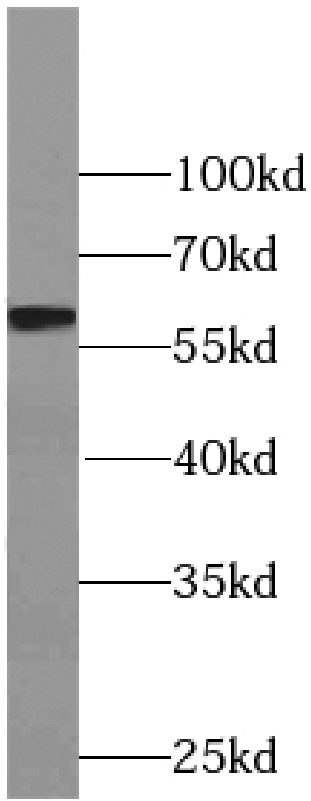
Image:



Immunohistochemistry of paraffin-embedded human colon using FNab09563(YES1-Specific antibody) at dilution of 1:50



IP Result of anti-YES1-Specific (IP:FNab09563, 4ug; Detection:FNab09563 1:300) with human placenta tissue lysate 1520ug.



human placenta tissue were subjected to SDS PAGE followed by western blot with FNab09563(YES1-Specific antibody) at dilution of 1:300