

## WWC2 antibody

### Product Information

Catalog No.:	FNab09532
Size:	100µg
Form:	liquid
Purification:	Immunogen affinity purified
Purity:	≥95% as determined by SDS-PAGE
Host:	Rabbit
Clonality:	polyclonal
Clone ID:	None
IsoType:	IgG
Storage:	PBS with 0.02% sodium azide and 50% glycerol pH 7.3, -20°C for 12 months(Avoid repeated freeze / thaw cycles.)

### Background

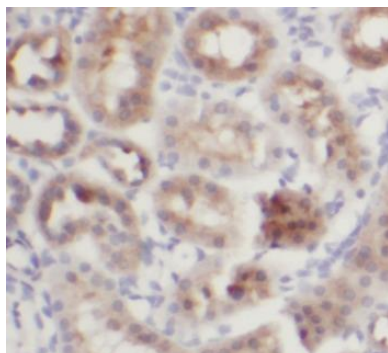
WWC2 also named as BOMB or WW and C2 domain containing 2 is 1192 amino acid protein, which contains 1 C2 domain and 2 WW domains. WWC2 localizes in cytoplasm and belongs to the WWC family., WWC2 exists as seven alternatively spliced isoforms and is encoded by a gene located on human chromosome 4q35.1. WWC2 may be expressed in liver, brain, prostate and kidney. The function of WWC2 is still non-known and need to be further studied.

### Immunogen information

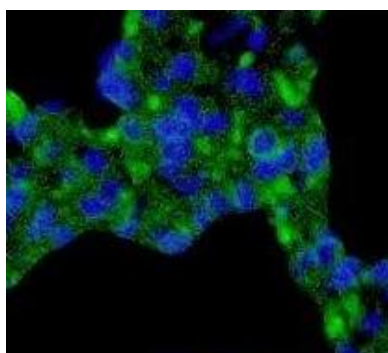
Immunogen:	WW and C2 domain containing 2
Synonyms:	Protein WWC2 BH-3-only member B WW domain-containing protein 2 WWC2 BOMB
Observed MW:	134 kDa
Uniprot ID :	Q6AWC2

### Application

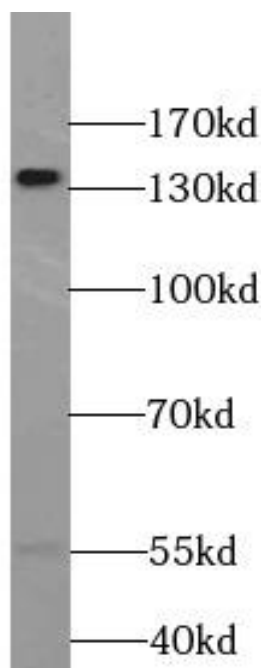
Reactivity:	Human, Mouse
Tested Application:	ELISA, WB, IHC, IF
Recommended dilution:	WB: 1:200-1:2000; IP: 1:200-1:2000; IF: 1:20-1:200; IHC: 1:20-1:200
Image:	



Immunohistochemistry of paraffin-embedded human kidney tissue slide using FNab09532(WWC2 Antibody) at dilution of 1:50



Immunofluorescent analysis of HEK-293 cells using FNab09532 ( WWC2 Antibody) at dilution of 1:50 and Alexa Fluor 488-conjugated AffiniPure Goat Anti-Rabbit IgG(H+L)



mouse brain tissue were subjected to SDS PAGE followed by western blot with FNab09532(WWC2 Antibody) at dilution of 1:600