

## WDR46 antibody

### Product Information

|               |  |
|---------------|--|
| Catalog No.:  | FNab09496  |
| Size:         | 100µg  |
| Form:         | liquid   |
| Purification: | Immunogen affinity purified  |
| Purity:       | ≥95% as determined by SDS-PAGE   |
| Host:         | Rabbit   |
| Clonality:    | polyclonal   |
| Clone ID:     | None   |
| IsoType:      | IgG  |
| Storage:      | PBS with 0.02% sodium azide and 50% glycerol pH 7.3, -20°C for 12 months(Avoid repeated freeze / thaw cycles.) |

### Background

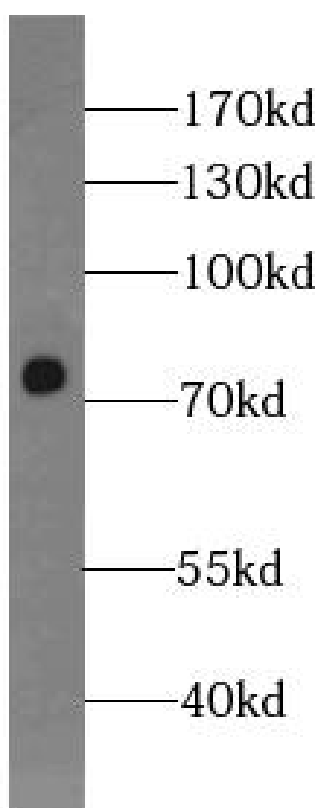
Scaffold component of the nucleolar structure. Required for localization of DDX21 and NCL to the granular compartment of the nucleolus.

### Immunogen information

|              |  |
|--------------|--|
| Immunogen:   | WD repeat domain 46  |
| Synonyms:    | WD repeat-containing protein 46 WD repeat-containing protein BING4 WDR46 BING4 C6orf11 |
| Observed MW: | 75 kDa   |
| Uniprot ID : | O15213   |

### Application

|                       |                                    |
|-----------------------|------------------------------------|
| Reactivity:           | Human, Mouse, Rat                  |
| Tested Application:   | ELISA, WB                          |
| Recommended dilution: | WB: 1:500-1:5000; IP: 1:200-1:1000 |
| Image:                |                                    |



Jurkat cells were subjected to SDS PAGE followed by western blot with FNab09496(WDR46 antibody) at dilution of 1:400