

## WDR45 antibody

### Product Information

|               |  |
|---------------|--|
| Catalog No.:  | FNab09495  |
| Size:         | 100µg  |
| Form:         | liquid   |
| Purification: | Immunogen affinity purified  |
| Purity:       | ≥95% as determined by SDS-PAGE   |
| Host:         | Rabbit   |
| Clonality:    | polyclonal   |
| Clone ID:     | None   |
| IsoType:      | IgG  |
| Storage:      | PBS with 0.02% sodium azide and 50% glycerol pH 7.3, -20°C for 12 months(Avoid repeated freeze / thaw cycles.) |

### Background

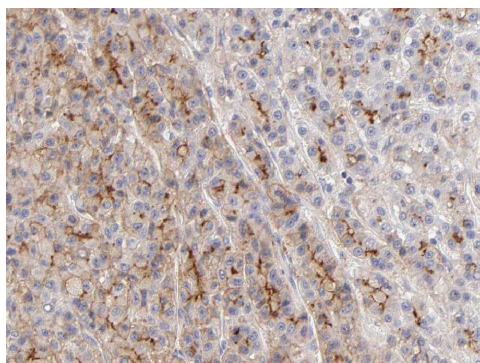
Plays an important role in the autophagy pathway, which is the major intracellular degradation system by which cytoplasmic materials are packaged into autophagosomes and delivered to lysosomes for degradation.

### Immunogen information

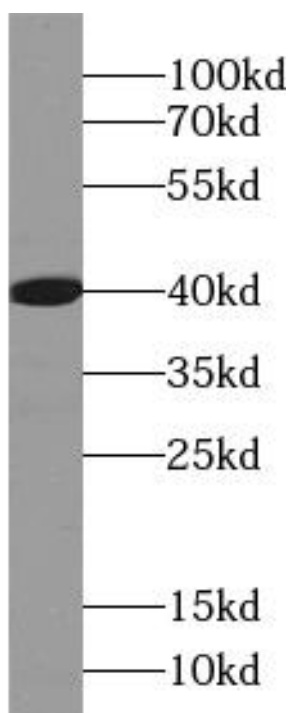
|              |   |
|--------------|---|
| Immunogen:   | WD repeat domain 45   |
| Synonyms:    | WD repeat domain phosphoinositide-interacting protein 4 (WIPI-4) WD repeat-containing protein 45 WDR45 WDRX1 WDRX14 WIPI4 |
| Observed MW: | 40 kDa  |
| Uniprot ID : | Q9Y484  |

### Application

|                       |   |
|-----------------------|---|
| Reactivity:           | Human   |
| Tested Application:   | ELISA, IHC, IF, WB                                |
| Recommended dilution: | WB: 1:500-1:5000; IHC: 1:20-1:200; IF: 1:10-1:100 |
| Image:                |   |



Immunohistochemistry of paraffin-embedded human liver using FNab09495(WDR45 antibody) at dilution of 1:50



Recombinant proteins were subjected to SDS PAGE followed by western blot with FNab09495(WDR45 Antibody) at dilution of 1:1000