

## FLT1 antibody

### Product Information

Catalog No.:	FNab09393
Size:	100µg
Form:	liquid
Purification:	Immunogen affinity purified
Purity:	≥95% as determined by SDS-PAGE
Host:	Rabbit
Clonality:	polyclonal
Clone ID:	None
IsoType:	IgG
Storage:	PBS with 0.02% sodium azide and 50% glycerol pH 7.3, -20°C for 12 months (Avoid repeated freeze / thaw cycles.)

### Background

This gene encodes a member of the vascular endothelial growth factor receptor (VEGFR) family. VEGFR family members are receptor tyrosine kinases (RTKs) which contain an extracellular ligand-binding region with seven immunoglobulin (Ig)-like domains, a transmembrane segment, and a tyrosine kinase (TK) domain within the cytoplasmic domain. This protein binds to VEGFR-A, VEGFR-B and placental growth factor and plays an important role in angiogenesis and vasculogenesis. Expression of this receptor is found in vascular endothelial cells, placental trophoblast cells and peripheral blood monocytes. Multiple transcript variants encoding different isoforms have been found for this gene. Isoforms include a full-length transmembrane receptor isoform and shortened, soluble isoforms. The soluble isoforms are associated with the onset of pre-eclampsia.

### Immunogen information

Immunogen:	fms-related tyrosine kinase 1 (vascular endothelial growth factor/vascular permeability factor receptor)
Synonyms:	Vascular endothelial growth factor receptor 1 (VEGFR-1) Fms-like tyrosine kinase 1 (FLT-1) Tyrosine-protein kinase FRT Tyrosine-protein kinase receptor FLT (FLT) Vascular permeability factor receptor FLT1 FLT FRT VEGFR1
Observed MW:	151 kDa
Uniprot ID :	P17948

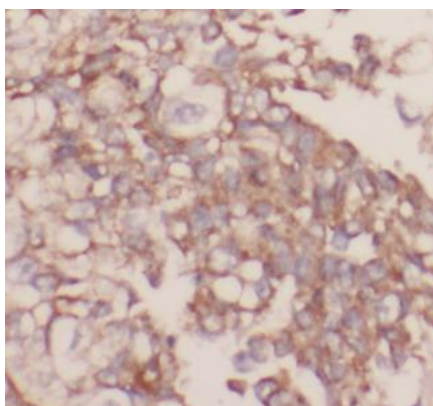
## Application

Reactivity: Human, Mouse, Rat

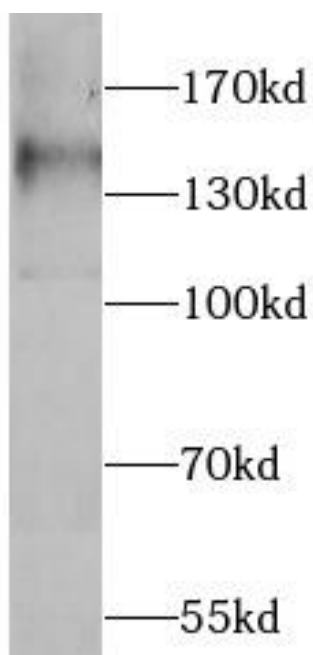
Tested Application: ELISA, WB, IHC

Recommended dilution: WB: 1:500 - 1:2000; IHC: 1:50 - 1:100

Image:



Immunohistochemistry of paraffin-embedded mouse lung using FNab09393(VEGFR1, FLT1 antibody) at dilution of 1:100



HEK-293 cells were subjected to SDS PAGE followed by western blot with FNab09393(VEGFR1, FLT1 antibody) at dilution of 1:1000