

USE1 antibody

Product Information

| | |
|---------------|--|
| Catalog No.: | FNab09296 |
| Size: | 100µg |
| Form: | liquid |
| Purification: | Immunogen affinity purified |
| Purity: | ≥95% as determined by SDS-PAGE |
| Host: | Rabbit |
| Clonality: | polyclonal |
| Clone ID: | None |
| IsoType: | IgG |
| Storage: | PBS with 0.02% sodium azide and 50% glycerol pH 7.3, -20°C for 12 months(Avoid repeated freeze / thaw cycles.) |

Background

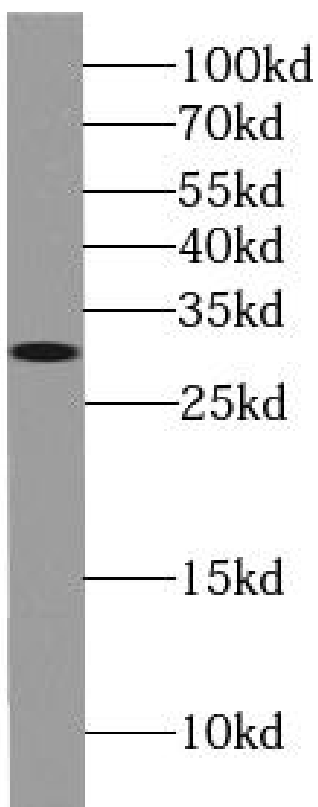
SNARE that may be involved in targeting and fusion of Golgi-derived retrograde transport vesicles with the ER.

Immunogen information

| | |
|--------------|---|
| Immunogen: | unconventional SNARE in the ER 1 homolog |
| Synonyms: | Vesicle transport protein USE1 Putative MAPK-activating protein PM26 USE1-like protein p31 USE1 USE1L |
| Observed MW: | 29 kDa |
| Uniprot ID : | Q9NZ43 |

Application

| | |
|--------------------------|--------------|
| Reactivity: | Human |
| Tested Application: | ELISA, WB |
| Recommended dilution:WB: | 1:200-1:1000 |
| Image: | |



HEK-293 cells were subjected to SDS PAGE followed by western blot with FNab09296(USE1 Antibody) at dilution of 1:300