

## UQCRFS1 antibody

### Product Information

Catalog No.:	FNab09282
Size:	100µg
Form:	liquid
Purification:	Immunogen affinity purified
Purity:	≥95% as determined by SDS-PAGE
Host:	Rabbit
Clonality:	polyclonal
Clone ID:	None
IsoType:	IgG
Storage:	PBS with 0.02% sodium azide and 50% glycerol pH 7.3, -20°C for 12 months(Avoid repeated freeze / thaw cycles.)

### Background

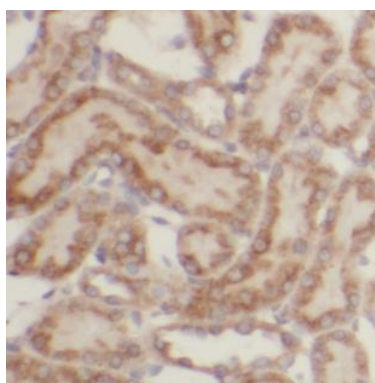
Component of the ubiquinol-cytochrome c reductase complex(complex III or cytochrome b-c1 complex), which is a respiratory chain that generates an electrochemical potential coupled to ATP synthesis. The transit peptide of the Rieske protein seems to form part of the bc1 complex and is considered to be the subunit 11/IX of that complex.

### Immunogen information

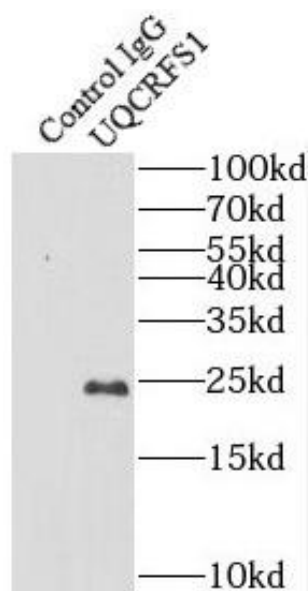
Immunogen:	ubiquinol-cytochrome c reductase, Rieske iron-sulfur polypeptide 1
Synonyms:	Cytochrome b-c1 complex subunit Rieske, mitochondrial Complex III subunit 5 Cytochrome b-c1 complex subunit 5 Rieske iron-sulfur protein (RISP) Rieske protein UQCRFS1 Ubiquinol-cytochrome c reductase iron-sulfur subunit Cytochrome b-c1 complex subunit 9 (Su9, Subunit 9) Alternative names: 8 kDa subunit 9 Complex III subunit IX Cytochrome b-c1 complex subunit 11 UQCRFS1 mitochondrial targeting sequence (UQCRFS1 MTS) Ubiquinol-cytochrome c reductase 8 kDa protein UQCRFS1
Observed MW:	25 kDa
Uniprot ID :	P47985

### Application

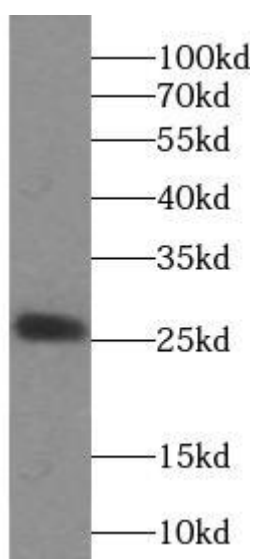
Reactivity:	Human, Mouse, Rat
Tested Application:	ELISA, IHC, WB, IP
Recommended dilution:	WB: 1:1000-1:3000; IHC:1:20-1:200; IP: 1:500-1:2000
Image:	



Immunohistochemistry of paraffin-embedded human kidney tissue slide using FNab09282(UQCRFS1 Antibody) at dilution of 1:50



IP Result of anti-UQCRFS1 (IP:FNab09282, 4ug; Detection:FNab09282 1:1000) with mouse heart tissue lysate 4000ug.



MCF-7 cells were subjected to SDS PAGE followed by western blot with FNab09282(UQCRFS1 Antibody) at dilution of 1:2000