

PLAU antibody

Product Information

Catalog No.:	FNab09267
Size:	100µg
Form:	liquid
Purification:	Immunogen affinity purified
Purity:	≥95% as determined by SDS-PAGE
Host:	Rabbit
Clonality:	polyclonal
Clone ID:	None
IsoType:	IgG
Storage:	PBS with 0.02% sodium azide and 50% glycerol pH 7.3, -20°C for 12 months(Avoid repeated freeze / thaw cycles.)

Background

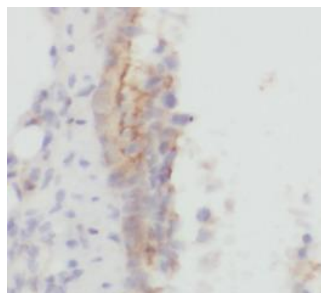
PLAU(Urokinase-type plasminogen activator) is also named as uPA and belongs to the peptidase S1 family. UPA initiates a proteolytic cascade, which degrades extracellular matrix during tissue growth and remodelling. The secreted proform of UPA is activated after binding to a specific high affinity cell surface receptor. Secreted UPA is exposed to rapid inactivation in the pericellular space by plasminogen activator inhibitor-1(PAI-1), which is stored in the extracellular matrix bound to vitronectin(PMID:9665342). It has 2 isoforms produced by alternative splicing. Defects in PLAU are the cause of Quebec platelet disorder(QPD).

Immunogen information

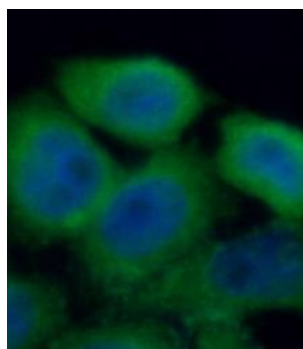
Immunogen:	plasminogen activator, urokinase
Synonyms:	Urokinase-type plasminogen activator (U-plasminogen activator, uPA) Urokinase-type plasminogen activator long chain A Urokinase-type plasminogen activator short chain A Urokinase-type plasminogen activator chain B PLAU
Observed MW:	54 kDa
Uniprot ID :	P00749

Application

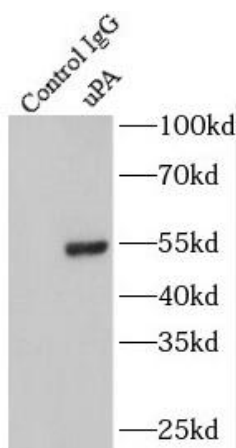
Reactivity:	Human, Mouse, Rat
Tested Application:	ELISA, WB, IHC, IP, IF
Recommended dilution:	WB: 1:500-1:1000; IHC:1:20-1:200; IF: 1:20-1:200; IP: 1:500-1:2000
Image:	



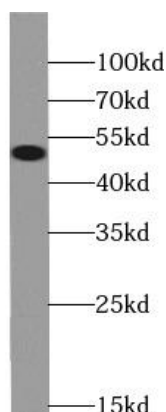
Immunohistochemistry of paraffin-embedded human skin using FNab09267(uPA antibody) at dilution of 1:50



Immunofluorescent analysis of HeLa cells using FNab09267 (uPA antibody) at dilution of 1:50 and Alexa Fluor 488-conjugated Goat Anti-Rabbit IgG(H+L)



IP Result of anti-uPA (IP:FNab09267, 4ug; Detection:FNab09267 1:1000) with HeLa cells lysate 2800ug.



HeLa cells were subjected to SDS PAGE followed by western blot with FNab09267(uPA antibody) at dilution of 1:500