

## UBE2E3 antibody

### Product Information

Catalog No.:	FNab09172
Size:	100µg
Form:	liquid
Purification:	Immunogen affinity purified
Purity:	≥95% as determined by SDS-PAGE
Host:	Rabbit
Clonality:	polyclonal
Clone ID:	None
IsoType:	IgG
Storage:	PBS with 0.02% sodium azide and 50% glycerol pH 7.3, -20°C for 12 months(Avoid repeated freeze / thaw cycles.)

### Background

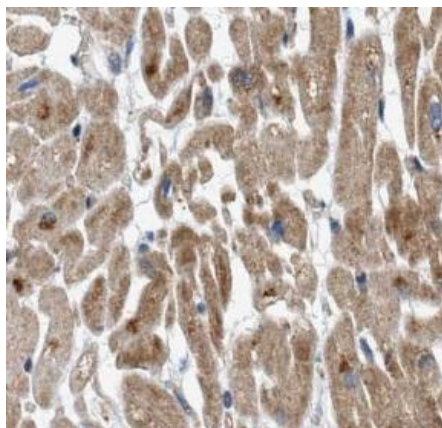
Accepts ubiquitin from the E1 complex and catalyzes its covalent attachment to other proteins. In vitro catalyzes 'Lys-11'-and 'Lys-48'-, as well as 'Lys-63'-linked polyubiquitination. Participates in the regulation of transepithelial sodium transport in renal cells. May be involved in cell growth arrest.

### Immunogen information

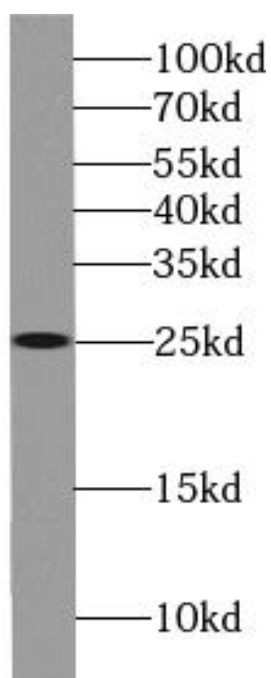
Immunogen:	ubiquitin-conjugating enzyme E2E 3
Synonyms:	Ubiquitin-conjugating enzyme E2 E3 E2 ubiquitin-conjugating enzyme E3 UbcH9 Ubiquitin carrier protein E3 Ubiquitin-conjugating enzyme E2-23 kDa Ubiquitin-protein ligase E3 UBE2E3 UBCE4 UBCH9
Observed MW:	23 kDa
Uniprot ID :	Q969T4

### Application

Reactivity:	Human, Mouse, Rat
Tested Application:	ELISA, WB, IHC
Recommended dilution:	WB: 1:500-1:2000; IHC: 1:20-1:200
Image:	



Immunohistochemistry of paraffin-embedded human heart using FNab09172(UBE2E3 antibody) at dilution of 1:50



Jurkat cells were subjected to SDS PAGE followed by western blot with FNab09172(UBE2E3 antibody) at dilution of 1:1000