

UBA6 antibody

Product Information

Catalog No.:	FNab09146
Size:	100µg
Form:	liquid
Purification:	Immunogen affinity purified
Purity:	≥95% as determined by SDS-PAGE
Host:	Rabbit
Clonality:	polyclonal
Clone ID:	None
IsoType:	IgG
Storage:	PBS with 0.02% sodium azide and 50% glycerol pH 7.3, -20°C for 12 months (Avoid repeated freeze / thaw cycles.)

Background

Modification of proteins with ubiquitin (UBB; MIM 191339) or ubiquitin-like proteins controls many signaling networks and requires a ubiquitin-activating enzyme (E1), a ubiquitin conjugating enzyme (E2), and a ubiquitin protein ligase (E3). UBE1L2 is an E1 enzyme that initiates the activation and conjugation of ubiquitin-like proteins (Jin et al., 2007 [PubMed 17597759]).

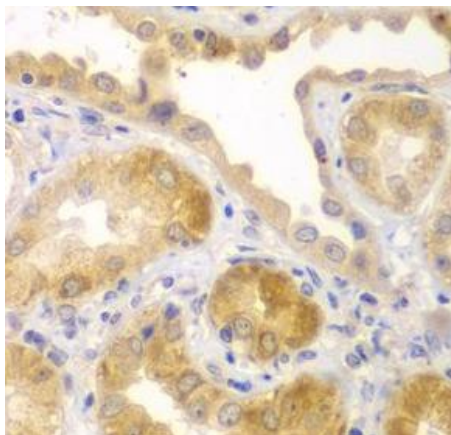
Immunogen information

Immunogen:	ubiquitin-like modifier activating enzyme 6
Synonyms:	Ubiquitin-like modifier-activating enzyme 6 (Ubiquitin-activating enzyme 6) Monocyte protein 4 (MOP-4) Ubiquitin-activating enzyme E1-like protein 2 (E1-L2) UBA6 MOP4 UBE1L2
Observed MW:	59 kDa, 118 kDa
Uniprot ID :	A0AVT1

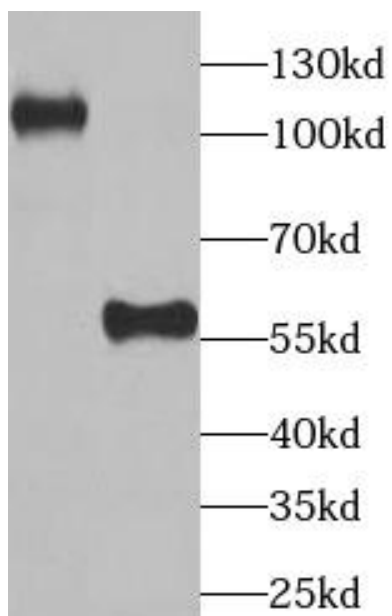
Application

Reactivity:	Human, Mouse, Rat
Tested Application:	ELISA, WB, IHC, IF
Recommended dilution:	WB: 1:500 - 1:2000; IHC: 1:50 - 1:200; IF: 1:50 - 1:200

Image:



Immunohistochemistry of paraffin-embedded human kidney using FNab09146(UBA6 antibody) at dilution of 1:100



human brain tissue were subjected to SDS PAGE followed by western blot with FNab09146(UBA6 antibody) at dilution of 1:1000