

## TULP1 antibody

### Product Information

Catalog No.:	FNab09107
Size:	100µg
Form:	liquid
Purification:	Immunogen affinity purified
Purity:	≥95% as determined by SDS-PAGE
Host:	Rabbit
Clonality:	polyclonal
Clone ID:	None
IsoType:	IgG
Storage:	PBS with 0.02% sodium azide and 50% glycerol pH 7.3, -20°C for 12 months(Avoid repeated freeze / thaw cycles.)

### Background

Required for normal development of photoreceptor synapses. Required for normal photoreceptor function and for long-term survival of photoreceptor cells. Interacts with cytoskeleton proteins and may play a role in protein transport in photoreceptor cells(By similarity). Binds lipids, especially phosphatidylinositol 3-phosphate, phosphatidylinositol 4-phosphate, phosphatidylinositol 5-phosphate, phosphatidylinositol 3,4-bisphosphate, phosphatidylinositol 4,5-bisphosphate, phosphatidylinositol 3,4,5-bisphosphate, phosphatidylserine and phosphatidic acid(in vitro). Contribute to stimulation of phagocytosis of apoptotic retinal pigment epithelium(RPE) cells and macrophages.

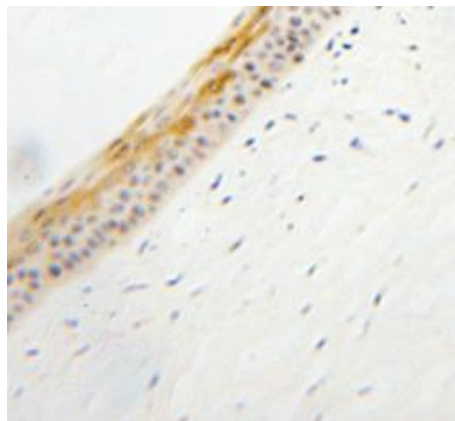
### Immunogen information

Immunogen:	tubby like protein 1
Synonyms:	Tubby-related protein 1 Tubby-like protein 1 TULP1 TUBL1
Observed MW:	70 kDa
Uniprot ID :	O00294

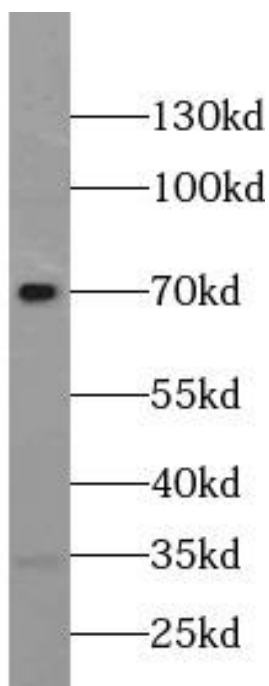
### Application

Reactivity:	Human, Mouse, Rat
Tested Application:	ELISA, WB, IHC, IF
Recommended dilution:	WB: 1:500-1:1000; IHC: 1:20-1:200; IF: 1:10-1:100

Image:



Immunohistochemistry of paraffin-embedded human eye using FNab09107(TULP1 antibody) at dilution of 1:50



human brain tissue were subjected to SDS PAGE followed by western blot with FNab09107(TULP1 antibody) at dilution of 1:500