

RO60 antibody

Product Information

Catalog No.:	FNab09012
Size:	100µg
Form:	liquid
Purification:	Immunogen affinity purified
Purity:	≥95% as determined by SDS-PAGE
Host:	Rabbit
Clonality:	polyclonal
Clone ID:	None
IsoType:	IgG
Storage:	PBS with 0.02% sodium azide and 50% glycerol pH 7.3, -20°C for 12 months(Avoid repeated freeze / thaw cycles.)

Background

RNA-binding protein that binds to misfolded non-coding RNAs, pre-5S rRNA, and several small cytoplasmic RNA molecules known as Y RNAs. May stabilize some of these RNAs and protect them from degradation. May play roles in cilia formation and/or maintenance.

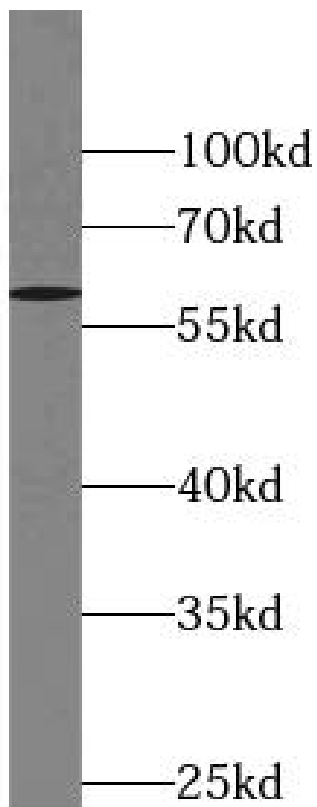
Immunogen information

Immunogen:	TROVE domain family, member 2
Synonyms:	RNA-binding protein RO60 60 kDa SS-A/Ro ribonucleoprotein (60 kDa Ro protein, 60 kDa ribonucleoprotein Ro, RoRNP) Ro 60 kDa autoantigen (Ro60 autoantigen) Sjogren syndrome antigen A2 Sjogren syndrome type A antigen (SS-A) TROVE domain family member 2 RO60 SSA2 TROVE2
Observed MW:	60 kDa
Uniprot ID :	P10155

Application

Reactivity:	Human, Mouse, Rat
Tested Application:	ELISA, WB, IF
Recommended dilution:	WB: 1:500-1:5000; IF: 1:10-1:100

Image:



MCF7 cells were subjected to SDS PAGE followed by western blot with FNab09012(TROVE2 antibody) at dilution of 1:500