

SSR2 antibody

Product Information

Catalog No.:	FNab08943
Size:	100µg
Form:	liquid
Purification:	Immunogen affinity purified
Purity:	≥95% as determined by SDS-PAGE
Host:	Rabbit
Clonality:	polyclonal
Clone ID:	None
IsoType:	IgG
Storage:	PBS with 0.02% sodium azide and 50% glycerol pH 7.3, -20°C for 12 months(Avoid repeated freeze / thaw cycles.)

Background

TRAPB(translocon-associated protein subunit beta), also known as SSR2(signal sequence receptor subunit beta), is a 22-kDa single-spanning membrane glycoprotein of the endoplasmic reticulum(ER)(PMID: 7789174). It is a part of the tetrameric TRAP complex(TRAP-alpha, TRAP-beta, TRAP-delta and TRAP-gamma) which functions in regulating the retention of ER resident proteins(PMID: 7916687). The TRAP complex is also involved in endoplasmic reticulum-associated degradation(ERAD)(PMID: 17380188).

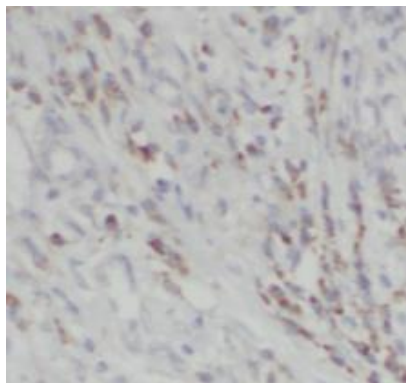
Immunogen information

Immunogen:	signal sequence receptor, beta(translocon-associated protein beta)
Synonyms:	Translocon-associated protein subunit beta (TRAP-beta) Signal sequence receptor subunit beta (SSR-beta) SSR2 TRAPB
Observed MW:	24 kDa
Uniprot ID :	P43308

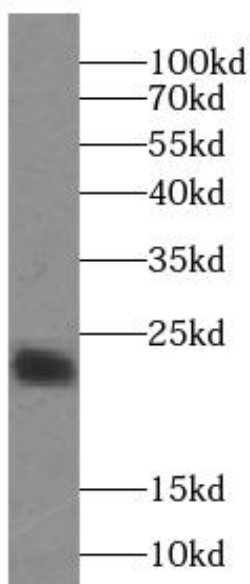
Application

Reactivity:	Human, Mouse, Rat
Tested Application:	ELISA, WB, IHC, FC, IF
Recommended dilution:	WB: 1:500-1:5000; IHC: 1:20-1:200; IF: 1:10-1:100

Image:



Immunohistochemistry of paraffin-embedded human breast cancer using FNab08943 (TRAPB, SSR2 antibody) at dilution of 1:50



HepG2 cells were subjected to SDS PAGE followed by western blot with FNab08943 (TRAPB, SSR2 antibody) at dilution of 1:1000