

TOM1L1 antibody

Product Information

Catalog No.:	FNab08857
Size:	100µg
Form:	liquid
Purification:	Immunogen affinity purified
Purity:	≥95% as determined by SDS-PAGE
Host:	Rabbit
Clonality:	polyclonal
Clone ID:	None
IsoType:	IgG
Storage:	PBS with 0.02% sodium azide and 50% glycerol pH 7.3, -20°C for 12 months(Avoid repeated freeze / thaw cycles.)

Background

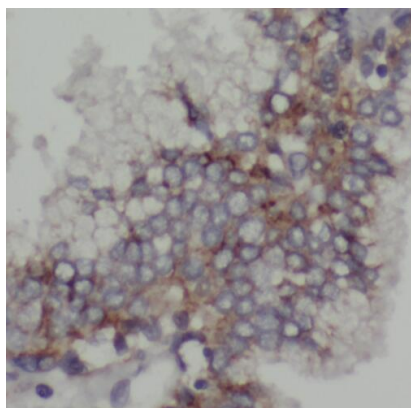
Probable adapter protein involved in signaling pathways. Interacts with the SH2 and SH3 domains of various signaling proteins when it is phosphorylated. May promote FYN activation, possibly by disrupting intramolecular SH3-dependent interactions(By similarity).

Immunogen information

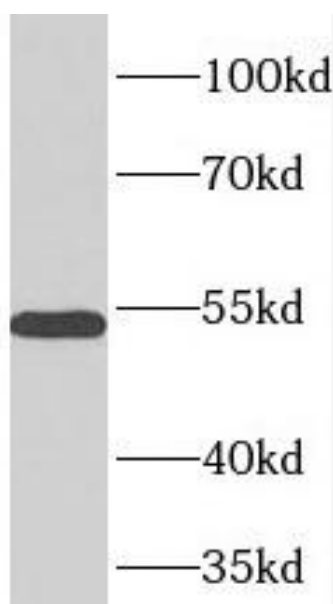
Immunogen:	target of myb1-like 1
Synonyms:	TOM1-like protein 1 Src-activating and signaling molecule protein Target of Myb-like protein 1 TOM1L1 SRCASM
Observed MW:	53 kDa
Uniprot ID :	O75674

Application

Reactivity:	Human
Tested Application:	ELISA, WB, IHC
Recommended dilution:	WB: 1:500-1:2000; IHC: 1:20-1:200
Image:	



Immunohistochemistry of paraffin-embedded human prostate cancer using FNab08857(TOM1L1 antibody) at dilution of 1:50



HeLa cells were subjected to SDS PAGE followed by western blot with FNab08857(TOM1L1 antibody) at dilution of 1:500