

## anti- TMEM16A/DOG1 antibody

### Product Information

Catalog No.:	FNab08758
Size:	100µg
Form:	liquid
Purification:	Immunogen affinity purified
Purity:	≥95% as determined by SDS-PAGE
Host:	Rabbit
Clonality:	polyclonal
Clone ID:	None
IsoType:	IgG
Storage:	PBS with 0.02% sodium azide and 50% glycerol pH 7.3, -20°C for 12 months (Avoid repeated freeze / thaw cycles.)

### Background

ANO1 also named as DOG1, ORAOV2, TAOS2 and TMEM16A, acts as a calcium-activated chloride channel. It is required for normal tracheal development. ANO1(or DOG1) is used as an aid in the identification and diagnosis of gastrointestinal stromal tumors(GIST) within the context of an antibody panel, the patient's clinical history, and other diagnostic tests evaluated by a qualified pathologist. The immunogen is the C-terminal of ANO1. This antibody can recognize isoform1 and isoform2 of human ANO1.

### Immunogen information

Immunogen:	Transmembrane protein 16A
Synonyms:	ANO1, Anoctamin 1, DOG1, FLJ10261, ORAOV2, TAOS2, TMEM16A, TMEM16A/DOG1, Transmembrane protein 16A
Observed MW:	None
Uniprot ID :	Q5XXA6

### Application

Reactivity:	Human, Rat
-------------	------------

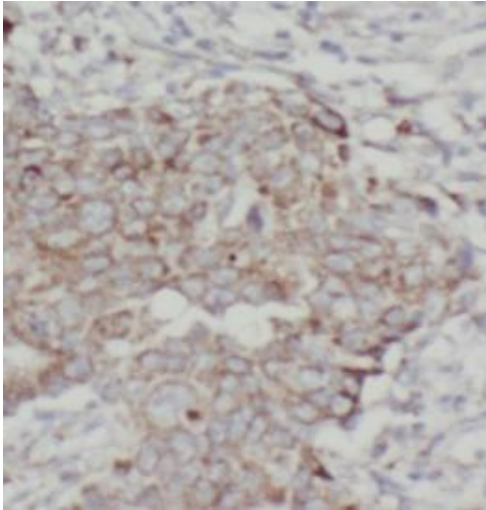
### Wuhan Fine Biotech Co., Ltd.

B9 Bld, High-Tech Medical Devices Park, No. 818 Gaoxin Ave. East Lake High-Tech Development Zone. Wuhan, Hubei, China(430206)

Tested Application: ELISA, IHC

Recommended dilution:IHC: 1:20-1:200

Image:



Immunohistochemistry of paraffin-embedded breast cancer tissue slide using FNab08758(TMEM16A antibody) at dilution of 1:50

**Wuhan Fine Biotech Co., Ltd.**

B9 Bld, High-Tech Medical Devices Park, No. 818 Gaoxin Ave. East Lake High-Tech Development Zone. Wuhan, Hubei, China(430206)

Tel : (0086)027-87384275

Fax: (0086)027-87800889

[www.fn-test.com](http://www.fn-test.com)