

## TLE1 antibody

### Product Information

Catalog No.:	FNab08720
Size:	100µg
Form:	liquid
Purification:	Protein A+G purification
Purity:	≥95% as determined by SDS-PAGE
Host:	Mouse
Clonality:	monoclonal
Clone ID:	8F4
IsoType:	IgG1
Storage:	PBS with 0.02% sodium azide and 50% glycerol pH 7.3, -20°C for 12 months(Avoid repeated freeze / thaw cycles.)

### Background

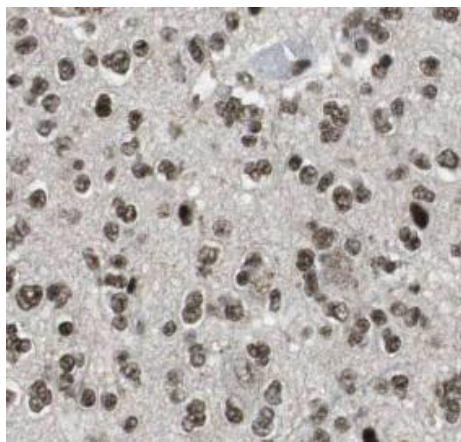
Transcriptional corepressor that binds to a number of transcription factors. Inhibits NF-kappa-B-regulated gene expression. Inhibits the transcriptional activation mediated by FOXA2, and by CTNNB1 and TCF family members in Wnt signaling. The effects of full-length TLE family members may be modulated by association with dominant-negative AES. Unusual function as coactivator for ESRRG.

### Immunogen information

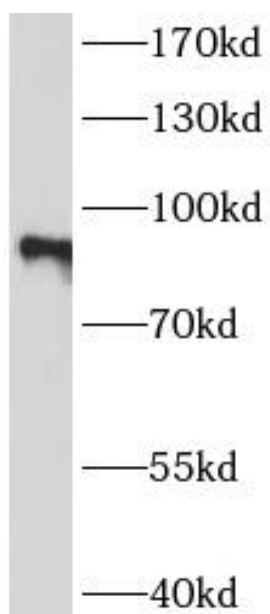
Immunogen:	transducin-like enhancer of split 1(E(sp1) homolog, Drosophila)
Synonyms:	Transducin-like enhancer protein 1 E(Sp1) homolog Enhancer of split groucho-like protein 1 (ESG1) TLE1
Observed MW:	85 kDa
Uniprot ID :	Q04724

### Application

Reactivity:	Human
Tested Application:	ELISA, WB, IHC
Recommended dilution:	WB: 1:500-1:2000; IHC: 1:20-1:200
Image:	



Immunohistochemistry of paraffin-embedded human gliomas tissue slide using FNab08720(TLE1 Antibody) at dilution of 1:100



Jurkat cells were subjected to SDS PAGE followed by western blot with FNab08720( TLE1 Antibody) at dilution of 1:1000