

TIMM9 antibody

Product Information

Catalog No.:	FNab08704
Size:	100μg
Form:	liquid
Purification:	Immunogen affinity purified
Purity:	≥95% as determined by SDS-PAGE
Host:	Rabbit
Clonality:	polyclonal
Clone ID:	None
IsoType:	IgG
Storage:	PBS with 0.02% sodium azide and 50% glycerol pH 7.3, -20°C for 12 months(Avoid repeated freeze / thaw cycles.)

Background

Mitochondrial intermembrane chaperone that participates in the import and insertion of multi-pass transmembrane proteins into the mitochondrial inner membrane. May also be required for the transfer of beta-barrel precursors from the TOM complex to the sorting and assembly machinery(SAM complex) of the outer membrane. Acts as a chaperone-like protein that protects the hydrophobic precursors from aggregation and guide them through the mitochondrial intermembrane space.

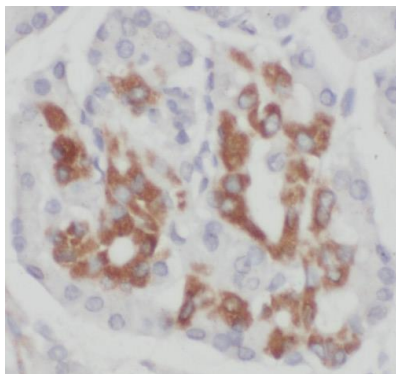
Immunogen information

Immunogen:	translocase of inner mitochondrial membrane 9 homolog(yeast)
Synonyms:	Mitochondrial import inner membrane translocase subunit Tim9 TIMM9 TIM9 TIM9A TIMM9A
Observed MW:	10 kDa
Uniprot ID :	Q9Y5J7

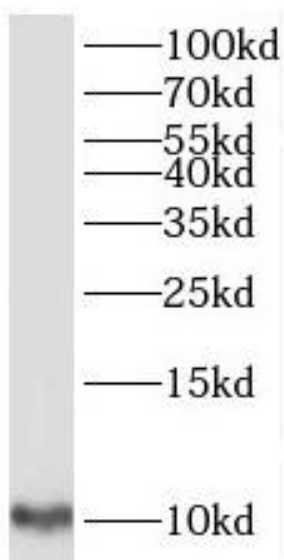
Application

Reactivity:	Human, Mouse, Rat
Tested Application:	ELISA, WB, IHC, IF
Recommended dilution:	WB: 1:500-1:2000; IHC: 1:20-1:200; IF: 1:20-1:200

Image:



Immunohistochemistry of paraffin-embedded human pancreas cancer using FNab08704(TIMM9 antibody) at dilution of 1:100



A549 cells were subjected to SDS PAGE followed by western blot with FNab08704(TIMM9 antibody) at dilution of 1:300