

## TIMM50 antibody

### Product Information

Catalog No.:	FNab08702
Size:	100µg
Form:	liquid
Purification:	Immunogen affinity purified
Purity:	≥95% as determined by SDS-PAGE
Host:	Rabbit
Clonality:	polyclonal
Clone ID:	None
IsoType:	IgG
Storage:	PBS with 0.02% sodium azide and 50% glycerol pH 7.3, -20°C for 12 months(Avoid repeated freeze / thaw cycles.)

### Background

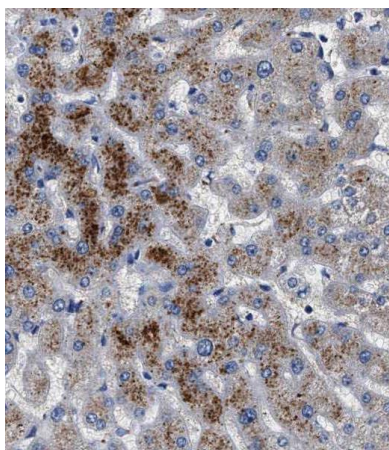
Essential component of the TIM23 complex, a complex that mediates the translocation of transit peptide-containing proteins across the mitochondrial inner membrane. Has some phosphatase activity in vitro; however such activity may not be relevant in vivo. Isoform 2 may participate in the release of snRNPs and SMN from the Cajal body.

### Immunogen information

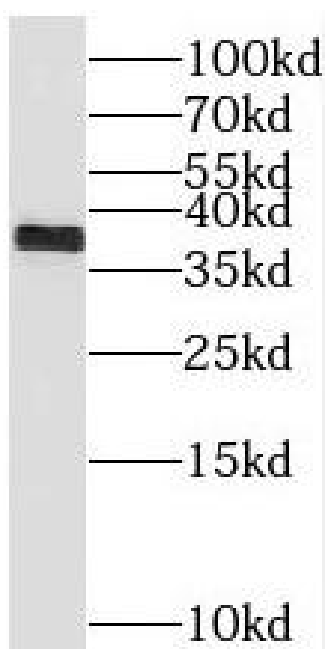
Immunogen:	translocase of inner mitochondrial membrane 50 homolog
Synonyms:	Mitochondrial import inner membrane translocase subunit TIM50 TIMM50 TIM50
Observed MW:	35-40 kDa
Uniprot ID :	Q3ZCQ8

### Application

Reactivity:	Human, Rat
Tested Application:	ELISA, WB, IHC
Recommended dilution:	WB: 1:500-1:2000; IHC: 1:20-1:200
Image:	



Immunohistochemistry of paraffin-embedded human liver slide using FNab08702(TIMM50Antibody) at dilution of 1:50



HeLa cells were subjected to SDS PAGE followed by western blot with FNab08702(TIMM50 antibody) at dilution of 1:1000