

TIMM22 antibody

Product Information

Catalog No.:	FNab08699
Size:	100µg
Form:	liquid
Purification:	Immunogen affinity purified
Purity:	≥95% as determined by SDS-PAGE
Host:	Rabbit
Clonality:	polyclonal
Clone ID:	None
IsoType:	IgG
Storage:	PBS with 0.02% sodium azide and 50% glycerol pH 7.3, -20°C for 12 months(Avoid repeated freeze / thaw cycles.)

Background

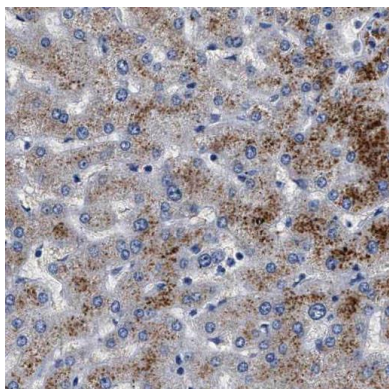
Essential core component of the TIM22 complex, a complex that mediates the import and insertion of multi-pass transmembrane proteins into the mitochondrial inner membrane. In the TIM22 complex, it constitutes the voltage-activated and signal-gated channel. Forms a twin-pore translocase that uses the membrane potential as external driving force in 2 voltage-dependent steps(By similarity).

Immunogen information

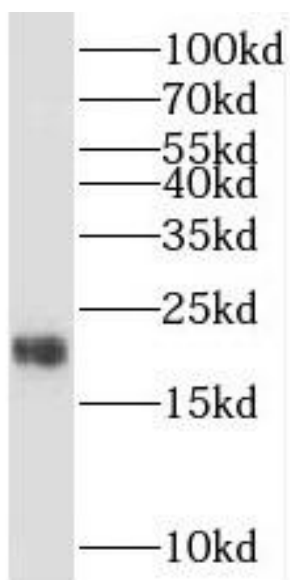
Immunogen:	translocase of inner mitochondrial membrane 22 homolog(yeast)
Synonyms:	Mitochondrial import inner membrane translocase subunit Tim22 Testis-expressed protein 4 TIMM22 TEX4 TIM22
Observed MW:	20 kDa
Uniprot ID :	Q9Y584

Application

Reactivity:	Human, Mouse, Rat
Tested Application:	ELISA, WB, IHC
Recommended dilution:	WB: 1:500-1:2000; IHC: 1:20-1:200
Image:	



Immunohistochemistry of paraffin-embedded human liver using FNab08699(TIMM22 antibody) at dilution of 1:50



HepG2 cells were subjected to SDS PAGE followed by western blot with FNab08699(TIMM22 antibody) at dilution of 1:1000