

## TIMM13 antibody

### Product Information

Catalog No.:	FNab08696
Size:	100µg
Form:	liquid
Purification:	Immunogen affinity purified
Purity:	≥95% as determined by SDS-PAGE
Host:	Rabbit
Clonality:	polyclonal
Clone ID:	None
IsoType:	IgG
Storage:	PBS with 0.02% sodium azide and 50% glycerol pH 7.3, -20°C for 12 months(Avoid repeated freeze / thaw cycles.)

### Background

Mitochondrial intermembrane chaperone that participates in the import and insertion of some multi-pass transmembrane proteins into the mitochondrial inner membrane. Also required for the transfer of beta-barrel precursors from the TOM complex to the sorting and assembly machinery(SAM complex) of the outer membrane. Acts as a chaperone-like protein that protects the hydrophobic precursors from aggregation and guide them through the mitochondrial intermembrane space. The TIMM8-TIMM13 complex mediates the import of proteins such as TIMM23, SLC25A12/ARALAR1 and SLC25A13/ARALAR2, while the predominant TIMM9-TIMM10 70 kDa complex mediates the import of much more proteins.

### Immunogen information

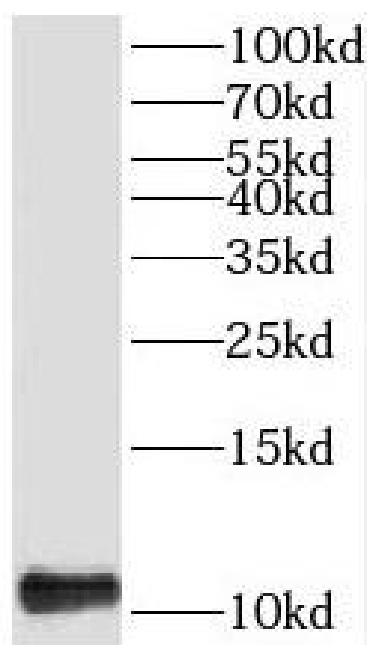
Immunogen:	translocase of inner mitochondrial membrane 13 homolog(yeast)
Synonyms:	Mitochondrial import inner membrane translocase subunit Tim13 TIMM13 TIM13B TIMM13A TIMM13B
Observed MW:	11 kDa
Uniprot ID :	Q9Y5L4

### Application

Reactivity:	Human
Tested Application:	ELISA, WB, IF

Recommended dilution: WB: 1:500-1:2000; IF: 1:20-1:200

Image:



PC-3 cells were subjected to SDS PAGE followed by western blot with FNab08696(TIMM13 antibody) at dilution of 1:300