

## TET2 antibody

### Product Information

Catalog No.:	FNab08603
Size:	100µg
Form:	liquid
Purification:	Immunogen affinity purified
Purity:	≥95% as determined by SDS-PAGE
Host:	Rabbit
Clonality:	polyclonal
Clone ID:	None
IsoType:	IgG
Storage:	PBS with 0.02% sodium azide and 50% glycerol pH 7.3, -20°C for 12 months (Avoid repeated freeze / thaw cycles.)

### Background

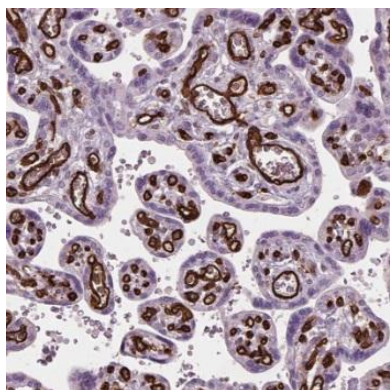
The protein encoded by this gene is a methylcytosine dioxygenase that catalyzes the conversion of methylcytosine to 5-hydroxymethylcytosine. The encoded protein is involved in myelopoiesis, and defects in this gene have been associated with several myeloproliferative disorders. Two variants encoding different isoforms have been found for this gene.

### Immunogen information

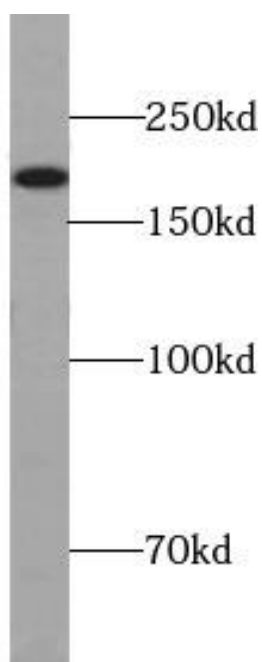
Immunogen:	tet oncogene family member 2
Synonyms:	Methylcytosine dioxygenase TET2 TET2 KIAA1546
Observed MW:	224 kDa
Uniprot ID :	Q6N021

### Application

Reactivity:	Human, Mouse, Rat
Tested Application:	ELISA, WB, IHC
Recommended dilution:	WB: 1:500 - 1:2000; IHC: 1:50 - 1:100
Image:	



Immunohistochemistry of paraffin-embedded human placenta using FNab08603(TET2 antibody) at dilution of 1:200



HL-60 cells were subjected to SDS PAGE followed by western blot with FNab08603(TET2 antibody) at dilution of 1:500