

TCP1 antibody

Product Information

Catalog No.:	FNab08563
Size:	100µg
Form:	liquid
Purification:	Immunogen affinity purified
Purity:	≥95% as determined by SDS-PAGE
Host:	Rabbit
Clonality:	polyclonal
Clone ID:	None
IsoType:	IgG
Storage:	PBS with 0.02% sodium azide and 50% glycerol pH 7.3, -20°C for 12 months (Avoid repeated freeze / thaw cycles.)

Background

The protein encoded by this gene is a molecular chaperone that is a member of the chaperonin containing TCP1 complex (CCT), also known as the TCP1 ring complex (TRiC). This complex consists of two identical stacked rings, each containing eight different proteins. Unfolded polypeptides enter the central cavity of the complex and are folded in an ATP-dependent manner. The complex folds various proteins, including actin and tubulin. Alternate transcriptional splice variants of this gene, encoding different isoforms, have been characterized. In addition, three pseudogenes that appear to be derived from this gene have been found.

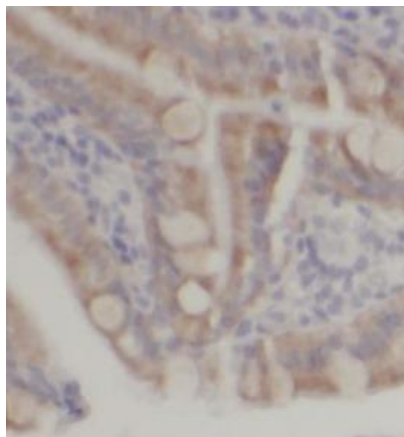
Immunogen information

Immunogen:	t-complex 1
Synonyms:	T-complex protein 1 subunit alpha (TCP-1-alpha) CCT-alpha TCP1 CCT1 CCTA
Observed MW:	60 kDa
Uniprot ID :	P17987

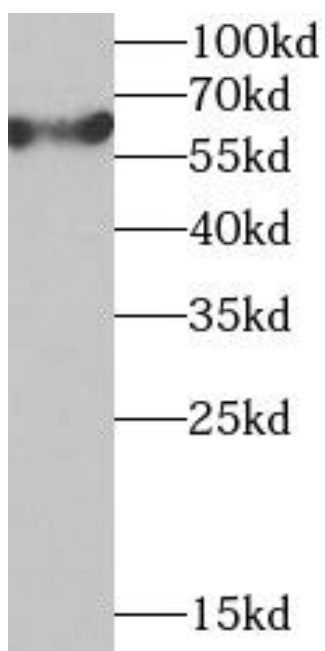
Application

Reactivity:	Human, Mouse, Rat
Tested Application:	ELISA, WB, IHC, IF
Recommended dilution:	WB: 1:500 - 1:2000; IHC: 1:50 - 1:200; IF: 1:50 - 1:200

Image:



Immunohistochemistry of paraffin-embedded human colon using FNab08563(TCP1 antibody) at dilution of 1:50



MCF7 cells were subjected to SDS PAGE followed by western blot with FNab08563(TCP1 antibody) at dilution of 1:1000