

TAP1 antibody

Product Information

Catalog No.:	FNab08499
Size:	100µg
Form:	liquid
Purification:	Immunogen affinity purified
Purity:	≥95% as determined by SDS-PAGE
Host:	Rabbit
Clonality:	polyclonal
Clone ID:	None
IsoType:	IgG
Storage:	PBS with 0.02% sodium azide and 50% glycerol pH 7.3, -20°C for 12 months(Avoid repeated freeze / thaw cycles.)

Background

Involved in the transport of antigens from the cytoplasm to the endoplasmic reticulum for association with MHC class I molecules. Also acts as a molecular scaffold for the final stage of MHC class I folding, namely the binding of peptide. Nascent MHC class I molecules associate with TAP via tapasin. Inhibited by the covalent attachment of herpes simplex virus ICP47 protein, which blocks the peptide-binding site of TAP. Inhibited by human cytomegalovirus US6 glycoprotein, which binds to the luminal side of the TAP complex and inhibits peptide translocation by specifically blocking ATP-binding to TAP1 and prevents the conformational rearrangement of TAP induced by peptide binding. Inhibited by human adenovirus E3-19K glycoprotein, which binds the TAP complex and acts as a tapasin inhibitor, preventing MHC class I/TAP association. Expression of TAP1 is down-regulated by human Epstein-Barr virus vIL-10 protein, thereby affecting the transport of peptides into the endoplasmic reticulum and subsequent peptide loading by MHC class I molecules.

Immunogen information

Immunogen:	transporter 1, ATP-binding cassette, sub-family B(MDR/TAP)
Synonyms:	Antigen peptide transporter 1 (APT1) ATP-binding cassette sub-family B member 2 Peptide supply factor 1 Peptide transporter PSF1 (PSF-1) Peptide transporter TAP1 Peptide transporter involved in antigen processing 1 Really interesting new gene 4 protein (RING4) TAP1 ABCB2 PSF1 RING4 Y3
Observed MW:	70-81 kDa
Uniprot ID :	Q03518

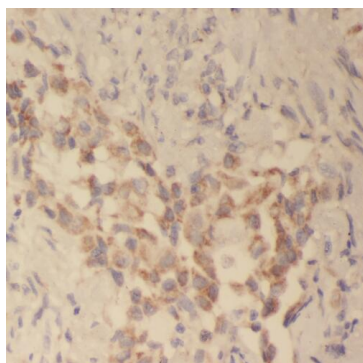
Application

Reactivity:	Human, Mouse
-------------	--------------

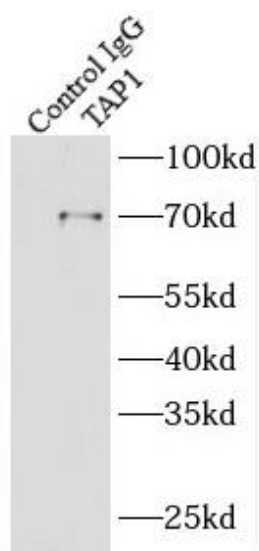
Tested Application: ELISA, IF, WB, IHC, IP

Recommended dilution: WB: 1:500-1:2000; IP: 1:200-1:2000; IHC: 1:20-1:200; IF: 1:20-1:200

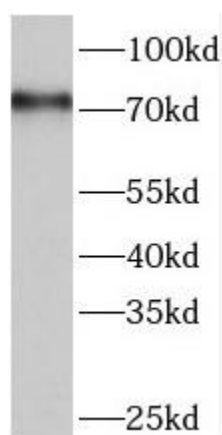
Image:



Immunohistochemistry of paraffin-embedded human pancreas cancer tissue slide using FNab08499(TAP1 Antibody) at dilution of 1:50



IP Result of anti-TAP1 (IP:FNab08499, 4ug; Detection:FNab08499 1:500) with HepG2 cells lysate 2400ug.



HepG2 cells were subjected to SDS PAGE followed by western blot with FNab08499(TAP1 Antibody) at dilution of 1:1000