

TAF15 antibody

Product Information

| | |
|---------------|---|
| Catalog No.: | FNab08480 |
| Size: | 100µg |
| Form: | liquid |
| Purification: | Immunogen affinity purified |
| Purity: | ≥95% as determined by SDS-PAGE |
| Host: | Rabbit |
| Clonality: | polyclonal |
| Clone ID: | None |
| IsoType: | IgG |
| Storage: | PBS with 0.02% sodium azide and 50% glycerol pH 7.3, -20°C for 12 months (Avoid repeated freeze / thaw cycles.) |

Background

This gene encodes a member of the TET family of RNA-binding proteins. The encoded protein plays a role in RNA polymerase II gene transcription as a component of a distinct subset of multi-subunit transcription initiation factor TFIID complexes. Translocations involving this gene play a role in acute leukemia and extraskelatal myxoid chondrosarcoma, and mutations in this gene may play a role in amyotrophic lateral sclerosis. Alternatively spliced transcript variants encoding multiple isoforms have been observed for this gene.

Immunogen information

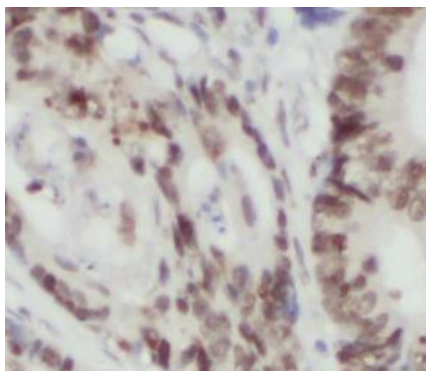
| | |
|--------------|---|
| Immunogen: | TAF15 RNA polymerase II, TATA box binding protein (TBP)-associated factor, 68kDa |
| Synonyms: | TATA-binding protein-associated factor 2N 68 kDa TATA-binding protein-associated factor (TAF(II)68, TAFII68) RNA-binding protein 56 TAF15 RBP56 TAF2N |
| Observed MW: | 80 kDa |
| Uniprot ID : | Q92804 |

Application

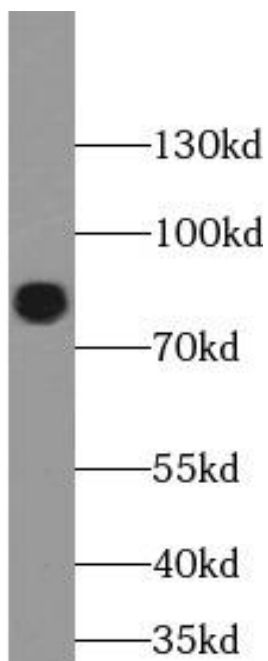
| | |
|---------------------|----------------|
| Reactivity: | Human |
| Tested Application: | ELISA, WB, IHC |

Recommended dilution: WB: 1:500 - 1:2000; IHC: 1:50 - 1:100

Image:



Immunohistochemistry of paraffin-embedded human colon cancer tissue slide using FNab08480(TAF15 Antibody) at dilution of 1:50



Jurkat cells were subjected to SDS PAGE followed by western blot with FNab08480(TAF15 Antibody) at dilution of 1:1000