

## SYNPO2L antibody

### Product Information

Catalog No.:	FNab08441
Size:	100µg
Form:	liquid
Purification:	Immunogen affinity purified
Purity:	≥95% as determined by SDS-PAGE
Host:	Rabbit
Clonality:	polyclonal
Clone ID:	None
IsoType:	IgG
Storage:	PBS with 0.02% sodium azide and 50% glycerol pH 7.3, -20°C for 12 months(Avoid repeated freeze / thaw cycles.)

### Background

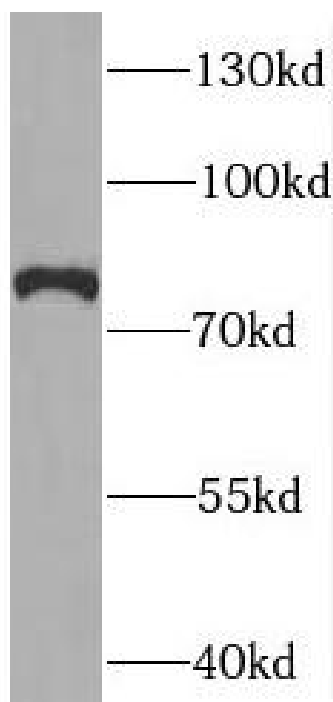
Actin-associated protein that may play a role in modulating actin-based shape.

### Immunogen information

Immunogen:	synaptopodin 2-like
Synonyms:	Synaptopodin 2-like protein SYNPO2L
Observed MW:	79 kDa
Uniprot ID :	Q9H987

### Application

Reactivity:	Human, Mouse, Rat
Tested Application:	ELISA, WB, IF
Recommended dilution:	WB: 1:500-1:2000; IF: 1:20-1:200
Image:	



mouse testis tissue were subjected to SDS PAGE followed by western blot with FNab08441(SYNPO2L antibody) at dilution of 1:300