

SYNE2 antibody

Product Information

Catalog No.:	FNab08436
Size:	100µg
Form:	liquid
Purification:	Immunogen affinity purified
Purity:	≥95% as determined by SDS-PAGE
Host:	Rabbit
Clonality:	polyclonal
Clone ID:	None
IsoType:	IgG
Storage:	PBS with 0.02% sodium azide and 50% glycerol pH 7.3, -20°C for 12 months(Avoid repeated freeze / thaw cycles.)

Background

Multi-isomeric modular protein which forms a linking network between organelles and the actin cytoskeleton to maintain the subcellular spatial organization. Component of SUN-protein-containing multivariate complexes also called LINC complexes which link the nucleoskeleton and cytoskeleton by providing versatile outer nuclear membrane attachment sites for cytoskeletal filaments. Involved in the maintenance of nuclear organization and structural integrity. Connects nuclei to the cytoskeleton by interacting with the nuclear envelope and with F-actin in the cytoplasm. Specifically, SYNE2 and SUN2 assemble in arrays of transmembrane actin-associated nuclear(TAN) lines which are bound to F-actin cables and couple the nucleus to retrograde actin flow during actin-dependent nuclear movement. Required for centrosome migration to the apical cell surface during early ciliogenesis.

Immunogen information

Immunogen:	spectrin repeat containing, nuclear envelope 2
Synonyms:	Nesprin-2 KASH domain-containing protein 2 (KASH2) Nuclear envelope spectrin repeat protein 2 Nucleus and actin connecting element protein (Protein NUANCE) Synaptic nuclear envelope protein 2 (Syne-2) SYNE2 KIAA1011 NUA
Observed MW:	55 kDa
Uniprot ID :	Q8WXH0

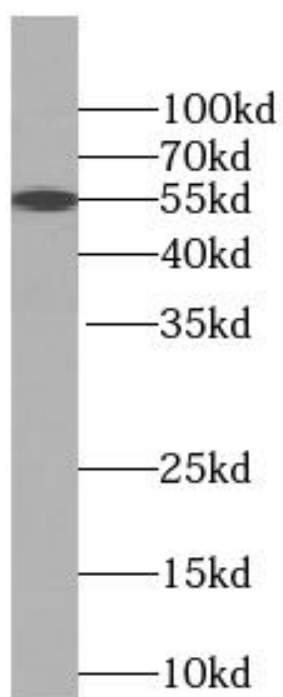
Application

Reactivity: Human

Tested Application: ELISA, WB

Recommended dilution: WB: 1:500-1:1000

Image:



HEK-293 cells were subjected to SDS PAGE followed by western blot with FNab08436(SYNE2 Antibody) at dilution of 1:600