

SYP antibody

Product Information

Catalog No.:	FNab08421
Size:	100μg
Form:	liquid
Purification:	Immunogen affinity purified
Purity:	≥95% as determined by SDS-PAGE
Host:	Rabbit
Clonality:	polyclonal
Clone ID:	None
IsoType:	IgG
Storage:	PBS with 0.02% sodium azide and 50% glycerol pH 7.3, -20°C for 12 months(Avoid repeated freeze / thaw cycles.)

Background

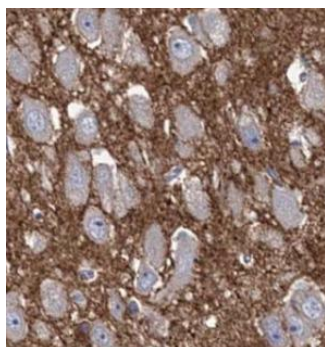
Synaptophysin(SYP, also known as major synaptic vesicle protein p38) is a 38-kDa integral membrane glycoprotein that regulates synaptic vesicle endocytosis. It is the most abundant synaptic vesicle protein by mass. Synaptophysin is present in neuroendocrine cells and neurons that participate in synaptic transmission. Synaptophysin is a useful marker for identification of neuroendocrine cells and neoplasms.

Immunogen information

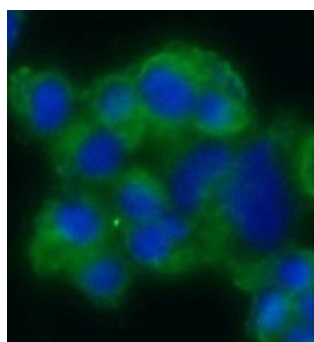
Immunogen:	synaptophysin
Synonyms:	Synaptophysin Major synaptic vesicle protein p38 SYP
Observed MW:	40 kDa
Uniprot ID :	P08247

Application

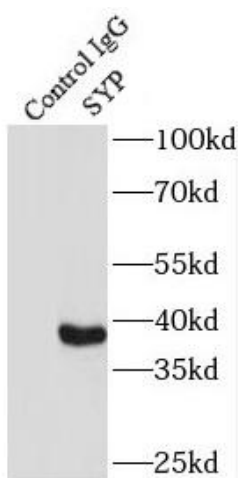
Reactivity:	Human, Mouse, Rat
Tested Application:	ELISA, WB, IHC, IP, IF
Recommended dilution:	WB: 1:500-1:3000; IP: 1:500-1:2000; IHC: 1:50-1:500; IF: 1:10-1:100
Image:	



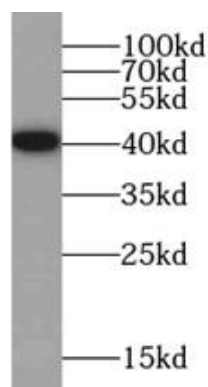
Immunohistochemistry of paraffin-embedded human pancreas tissue slide using FNab08421(SYP Antibody) at dilution of 1:200



Immunofluorescent analysis of PC-12 cells using FNab08421(SYP Antibody) at dilution of 1:25 and Alexa Fluor 488-conjugated Goat Anti-Rabbit IgG(H+L)



IP Result of anti-Synaptophysin; SYP (IP:FNab08421, 3ug; Detection:FNab08421 1:1000) with mouse brain tissue lysate 4000ug.



human brain tissue were subjected to SDS PAGE followed by western blot with FNab08421(SYP antibody) at dilution of 1:1000