

## SYN1-Specific antibody

### Product Information

Catalog No.:	FNab08416
Size:	100µg
Form:	liquid
Purification:	Immunogen affinity purified
Purity:	≥95% as determined by SDS-PAGE
Host:	Rabbit
Clonality:	polyclonal
Clone ID:	None
IsoType:	IgG
Storage:	PBS with 0.02% sodium azide and 50% glycerol pH 7.3, -20°C for 12 months(Avoid repeated freeze / thaw cycles.)

### Background

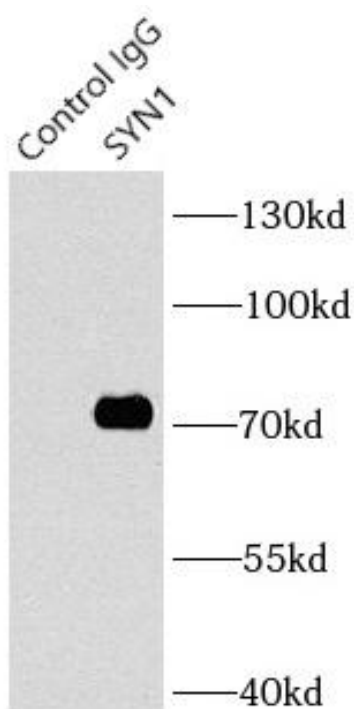
SYN1, also named as Brain protein 4.1, belongs to the synapsin family. SYN1 is a neuronal phosphoprotein that coats synaptic vesicles, binds to the cytoskeleton, and is believed to function in the regulation of neurotransmitter release. The complex formed with NOS1 and CAPON proteins is necessary for specific nitric-oxide functions at a presynaptic level. Defects in SYN1 are a cause of epilepsy X-linked with variable learning disabilities and behavior disorders(XELBD).

### Immunogen information

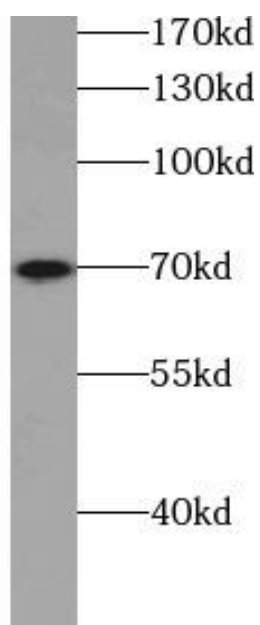
Immunogen:	synapsin I
Synonyms:	Synapsin-1 Brain protein 4.1 Synapsin I SYN1
Observed MW:	70 kDa
Uniprot ID :	P17600

### Application

Reactivity:	Human, Mouse, Rat
Tested Application:	ELISA, WB, IP
Recommended dilution:	WB: 1:2000-1:20000; IP: 1:1000-1:10000
Image:	



IP Result of anti-SYN1-Specific (IP: FNab08416, 4ug; Detection: FNab08416 1:3000) with rat brain tissue lysate 4000ug.



mouse brain tissue were subjected to SDS PAGE followed by western blot with FNab08416(SYN1-Specific Antibody) at dilution of 1:5000