

## SULT1A3 antibody

### Product Information

Catalog No.:	FNab08378
Size:	100µg
Form:	liquid
Purification:	Immunogen affinity purified
Purity:	≥95% as determined by SDS-PAGE
Host:	Rabbit
Clonality:	polyclonal
Clone ID:	None
IsoType:	IgG
Storage:	PBS with 0.02% sodium azide and 50% glycerol pH 7.3, -20°C for 12 months(Avoid repeated freeze / thaw cycles.)

### Background

Sulfotransferase that utilizes 3'-phospho-5'-adenylyl sulfate(PAPS) as sulfonate donor to catalyze the sulfate conjugation of phenolic monoamines(neurotransmitters such as dopamine, norepinephrine and serotonin) and phenolic and catechol drugs.

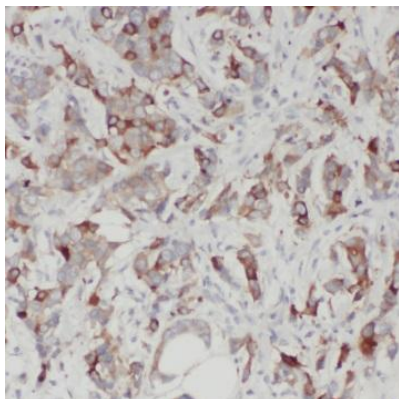
### Immunogen information

Immunogen:	sulfotransferase family, cytosolic, 1A, phenol-preferring, member 3
Synonyms:	Sulfotransferase 1A3 (ST1A3) Aryl sulfotransferase 1A3/1A4 Catecholamine-sulfating phenol sulfotransferase HAST3 M-PST Monoamine-sulfating phenol sulfotransferase Placental estrogen sulfotransferase Sulfotransferase 1A3/1A4 Sulfotransferase, monoamine-preferring Thermolabile phenol sulfotransferase (TL-PST) SULT1A3 STM
Observed MW:	30-34 kDa
Uniprot ID :	P0DMM9

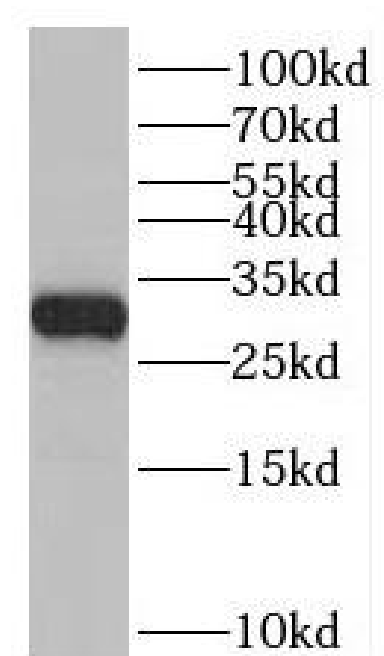
### Application

Reactivity:	Human, Mouse
Tested Application:	ELISA, WB, IHC
Recommended dilution:	WB: 1:500-1:2000; IHC: 1:20-1:200

Image:



Immunohistochemistry of paraffin-embedded human hepatocirrhosis using FNa08378(SULT1A3 antibody) at dilution of 1:50



A549 cells were subjected to SDS PAGE followed by western blot with FNa08378(SULT1A3 antibody) at dilution of 1:200