

SULT1A1 antibody

Product Information

Catalog No.:	FNab08376
Size:	100µg
Form:	liquid
Purification:	Immunogen affinity purified
Purity:	≥95% as determined by SDS-PAGE
Host:	Rabbit
Clonality:	polyclonal
Clone ID:	None
IsoType:	IgG
Storage:	PBS with 0.02% sodium azide and 50% glycerol pH 7.3, -20°C for 12 months (Avoid repeated freeze / thaw cycles.)

Background

Sulfotransferase enzymes catalyze the sulfate conjugation of many hormones, neurotransmitters, drugs, and xenobiotic compounds. These cytosolic enzymes are different in their tissue distributions and substrate specificities. The gene structure (number and length of exons) is similar among family members. This gene encodes one of two phenol sulfotransferases with thermostable enzyme activity. Multiple alternatively spliced variants that encode two isoforms have been identified for this gene.

Immunogen information

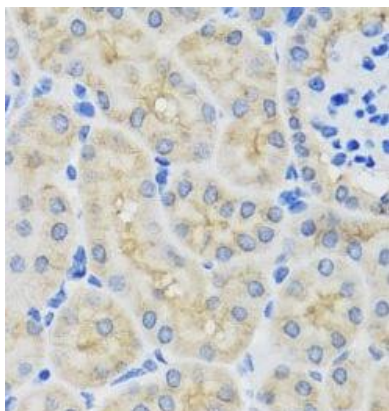
Immunogen:	sulfotransferase family, cytosolic, 1A, phenol-preferring, member 1
Synonyms:	Sulfotransferase 1A1 (ST1A1) Aryl sulfotransferase 1 HAST1/HAST2 Phenol sulfotransferase 1 Phenol-sulfating phenol sulfotransferase 1 (P-PST 1) ST1A3 Thermostable phenol sulfotransferase (Ts-PST) SULT1A1 STP STP1
Observed MW:	33 kDa
Uniprot ID :	P50225

Application

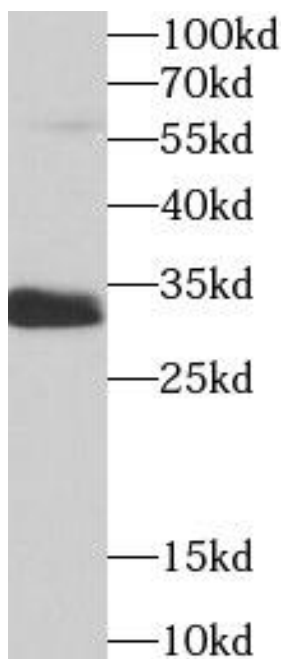
Reactivity:	Human, Mouse, Rat
Tested Application:	ELISA, WB, IHC

Recommended dilution: WB: 1:500 - 1:2000; IHC: 1:50 - 1:200

Image:



Immunohistochemistry of paraffin-embedded mouse kidney using FNab08376(SULT1A1 antibody) at dilution of 1:100



mouse liver tissue were subjected to SDS PAGE followed by western blot with FNab08376(SULT1A1 antibody) at dilution of 1:1000