

SULF2 antibody

Product Information

Catalog No.:	FNab08375
Size:	100µg
Form:	liquid
Purification:	Immunogen affinity purified
Purity:	≥95% as determined by SDS-PAGE
Host:	Rabbit
Clonality:	polyclonal
Clone ID:	None
IsoType:	IgG
Storage:	PBS with 0.02% sodium azide and 50% glycerol pH 7.3, -20°C for 12 months(Avoid repeated freeze / thaw cycles.)

Background

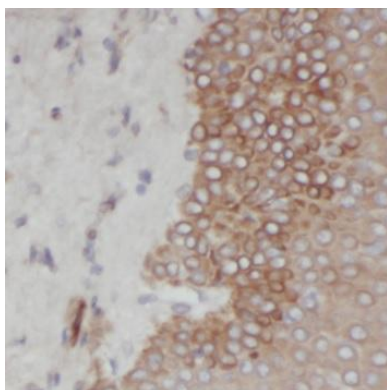
Exhibits arylsulfatase activity and highly specific endoglucosamine-6-sulfatase activity. It can remove sulfate from the C-6 position of glucosamine within specific subregions of intact heparin.

Immunogen information

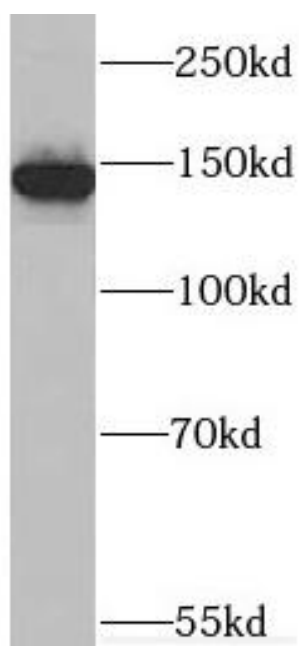
Immunogen:	sulfatase 2
Synonyms:	Extracellular sulfatase Sulf-2 (hSulf-2) Arylsulfatase N-acetylglucosamine-6-sulfatase Extracellular sulfatase Sulf-2 secreted form SULF2 KIAA1247
Observed MW:	130-150 kDa
Uniprot ID :	Q8IWU5

Application

Reactivity:	Human, Mouse, Rat
Tested Application:	ELISA, WB, IHC
Recommended dilution:	WB: 1:500-1:2000; IHC: 1:20-1:200
Image:	



Immunohistochemistry of paraffin-embedded human breast cancer using FNab08375(SULF2 antibody) at dilution of 1:50



mouse liver tissue were subjected to SDS PAGE followed by western blot with FNab08375(SULF2 antibody) at dilution of 1:500