

SUCLG2 antibody

Product Information

Catalog No.:	FNab08371
Size:	100µg
Form:	liquid
Purification:	Immunogen affinity purified
Purity:	≥95% as determined by SDS-PAGE
Host:	Rabbit
Clonality:	polyclonal
Clone ID:	None
IsoType:	IgG
Storage:	PBS with 0.02% sodium azide and 50% glycerol pH 7.3, -20°C for 12 months(Avoid repeated freeze / thaw cycles.)

Background

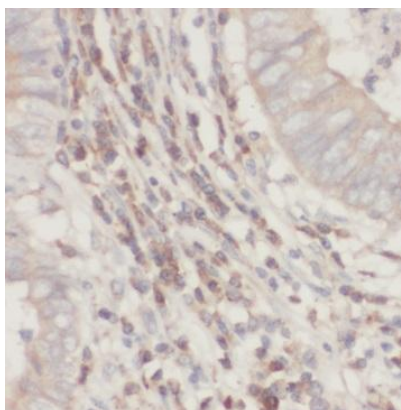
Catalyzes the GTP-dependent ligation of succinate and CoA to form succinyl-CoA.

Immunogen information

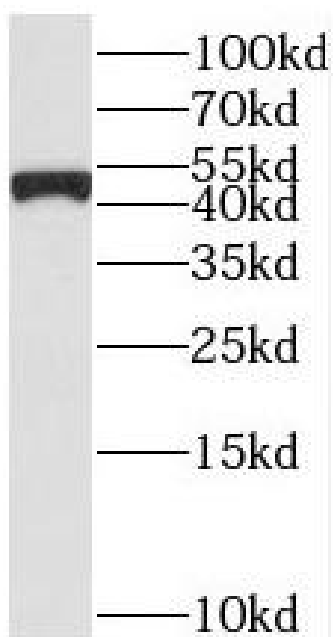
Immunogen:	succinate-CoA ligase, GDP-forming, beta subunit
Synonyms:	Succinate--CoA ligase [GDP-forming] subunit beta, mitochondrial GTP-specific succinyl-CoA synthetase subunit beta (G-SCS, GTPSCS) Succinyl-CoA synthetase beta-G chain (SCS-betaG) SUCLG2
Observed MW:	47 kDa
Uniprot ID :	Q96I99

Application

Reactivity:	Human, Mouse, Rat
Tested Application:	ELISA, WB, IHC
Recommended dilution:	WB: 1:500-1:2000; IHC: 1:20-1:200
Image:	



Immunohistochemistry of paraffin-embedded human colon cancer using FNab08371(SUCLG2 antibody) at dilution of 1:100



human heart tissue were subjected to SDS PAGE followed by western blot with FNab08371(SUCLG2 antibody) at dilution of 1:500