

SUCLG1 antibody

Product Information

Catalog No.:	FNab08370
Size:	100µg
Form:	liquid
Purification:	Immunogen affinity purified
Purity:	≥95% as determined by SDS-PAGE
Host:	Rabbit
Clonality:	polyclonal
Clone ID:	None
IsoType:	IgG
Storage:	PBS with 0.02% sodium azide and 50% glycerol pH 7.3, -20°C for 12 months(Avoid repeated freeze / thaw cycles.)

Background

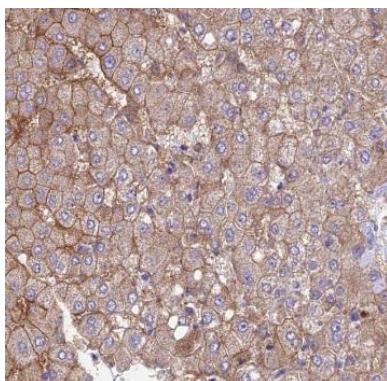
Catalyzes the ATP-or GTP-dependent ligation of succinate and CoA to form succinyl-CoA. The nature of the beta subunit determines the nucleotide specificity(By similarity).

Immunogen information

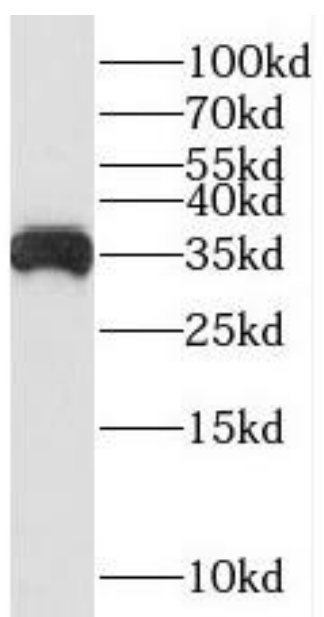
Immunogen:	succinate-CoA ligase, alpha subunit
Synonyms:	Succinate--CoA ligase [ADP/GDP-forming] subunit alpha, mitochondrial Succinyl-CoA synthetase subunit alpha (SCS-alpha) SUCLG1
Observed MW:	35 kDa
Uniprot ID :	P53597

Application

Reactivity:	Human, Mouse, Rat
Tested Application:	ELISA, WB, IHC
Recommended dilution:	WB: 1:500-1:2000; IHC: 1:20-1:200
Image:	



Immunohistochemistry of paraffin-embedded human liver cancer using FNa08370(SUCLG1 antibody) at dilution of 1:100



mouse kidney tissue were subjected to SDS PAGE followed by western blot with FNa08370(SUCLG1 antibody) at dilution of 1:500