

STRADB antibody

Product Information

Catalog No.:	FNab08350
Size:	100µg
Form:	liquid
Purification:	Immunogen affinity purified
Purity:	≥95% as determined by SDS-PAGE
Host:	Rabbit
Clonality:	polyclonal
Clone ID:	None
IsoType:	IgG
Storage:	PBS with 0.02% sodium azide and 50% glycerol pH 7.3, -20°C for 12 months(Avoid repeated freeze / thaw cycles.)

Background

Pseudokinase which, in complex with CAB39/MO25(CAB39/MO25alpha or CAB39L/MO25beta), binds to and activates STK11/LKB1. Adopts a closed conformation typical of active protein kinases and binds STK11/LKB1 as a pseudosubstrate, promoting conformational change of STK11/LKB1 in an active conformation(By similarity).

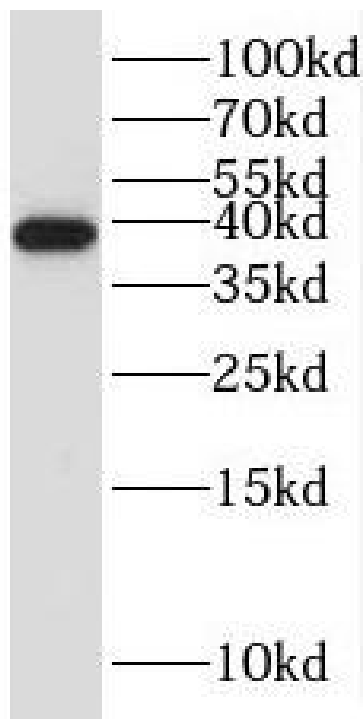
Immunogen information

Immunogen:	STE20-related kinase adaptor beta
Synonyms:	STE20-related kinase adapter protein beta (STRAD beta) Amyotrophic lateral sclerosis 2 chromosomal region candidate gene 2 protein CALS-21 ILP-interacting protein Pseudokinase ALS2CR2 STRADB ALS2CR2 ILPIP
Observed MW:	28-31 kDa;38-42 kDa
Uniprot ID :	Q9C0K7

Application

Reactivity:	Human, Mouse, Rat
Tested Application:	ELISA, WB
Recommended dilution:WB:	1:500-1:2000

Image:



Raji cells were subjected to SDS PAGE followed by western blot with FNab08350(STRADB Antibody) at dilution of 1:300