

STIM2 antibody

Product Information

Catalog No.:	FNab08322
Size:	100µg
Form:	liquid
Purification:	Immunogen affinity purified
Purity:	≥95% as determined by SDS-PAGE
Host:	Rabbit
Clonality:	polyclonal
Clone ID:	None
IsoType:	IgG
Storage:	PBS with 0.02% sodium azide and 50% glycerol pH 7.3, -20°C for 12 months(Avoid repeated freeze / thaw cycles.)

Background

Plays a role in mediating store-operated Ca^{2+} entry(SOCE), a Ca^{2+} influx following depletion of intracellular Ca^{2+} stores. Functions as a highly sensitive Ca^{2+} sensor in the endoplasmic reticulum which activates both store-operated and store-independent Ca^{2+} -influx. Regulates basal cytosolic and endoplasmic reticulum Ca^{2+} concentrations. Upon mild variations of the endoplasmic reticulum Ca^{2+} concentration, translocates from the endoplasmic reticulum to the plasma membrane where it probably activates the Ca^{2+} release-activated Ca^{2+} (CRAC) channels ORAI1, ORAI2 and ORAI3. May inhibit STIM1-mediated Ca^{2+} influx.

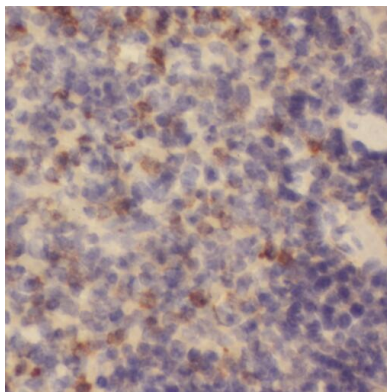
Immunogen information

Immunogen:	stromal interaction molecule 2
Synonyms:	Stromal interaction molecule 2 STIM2 KIAA1482
Observed MW:	85-115 kDa
Uniprot ID :	Q9P246

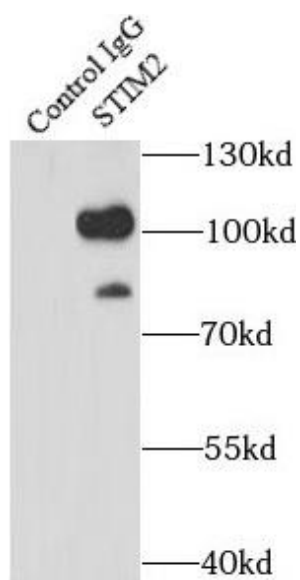
Application

Reactivity:	Human, Mouse, Rat
Tested Application:	ELISA, IHC, IP, WB
Recommended dilution:	WB: 1:500-1:2000; IP: 1:200-1:1000; IHC: 1:20-1:200

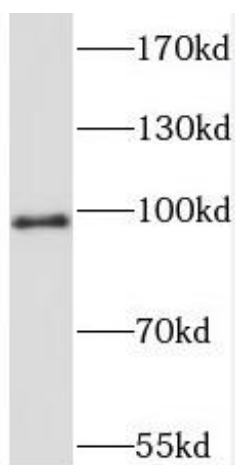
Image:



Immunohistochemistry of paraffin-embedded human spleen tissue slide using FNab08322(STIM2 Antibody) at dilution of 1:200



IP Result of anti-STIM2 (IP:FNab08322, 3ug; Detection:FNab08322 1:500) with HEK-293 cells lysate 2000ug.



HeLa cells were subjected to SDS PAGE followed by western blot with FNab08322(STIM2 Antibody) at dilution of 1:1000