

## STIM1 antibody

### Product Information

Catalog No.:	FNab08321
Size:	100µg
Form:	liquid
Purification:	Protein A+G purification
Purity:	≥95% as determined by SDS-PAGE
Host:	Mouse
Clonality:	monoclonal
Clone ID:	4G6
IsoType:	IgG2a
Storage:	PBS with 0.02% sodium azide and 50% glycerol pH 7.3, -20°C for 12 months(Avoid repeated freeze / thaw cycles.)

### Background

Plays a role in mediating store-operated  $\text{Ca}^{2+}$  entry(SOCE), a  $\text{Ca}^{2+}$  influx following depletion of intracellular  $\text{Ca}^{2+}$  stores(By similarity). Acts as  $\text{Ca}^{2+}$  sensor in the endoplasmic reticulum via its EF-hand domain. Upon  $\text{Ca}^{2+}$  depletion, translocates from the endoplasmic reticulum to the plasma membrane where it activates the  $\text{Ca}^{2+}$  release-activated  $\text{Ca}^{2+}$ (CRAC) channel subunit ORAI1(PubMed:16208375). Involved in enamel formation(By similarity). Activated following interaction with TMEM110/STIMATE, leading to promote STIM1 conformational switch(By similarity).

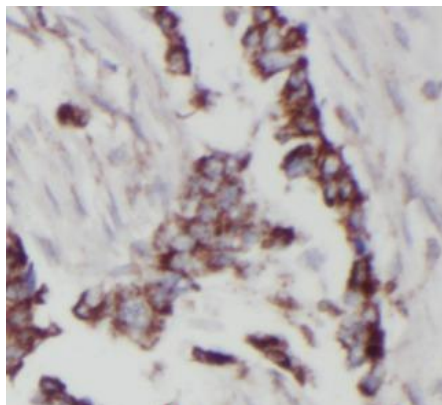
### Immunogen information

Immunogen:	stromal interaction molecule 1
Synonyms:	Stromal interaction molecule 1 STIM1 GOK
Observed MW:	77 kDa
Uniprot ID :	Q13586

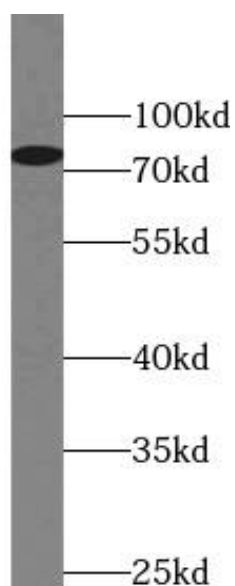
### Application

Reactivity:	Human, Mouse, Rat
Tested Application:	ELISA, WB, IHC
Recommended dilution:	WB: 1:200-1:2000 IHC: 1:50-1:500

Image:



Immunohistochemistry of paraffin-embedded human lung cancer tissue slide using FNab08321 (STIM1 Antibody) at dilution of 1:200 (under 10x lens). Heat-mediated antigen retrieval was performed with Tris-EDTA buffer (pH 9).



Jurkat cells were subjected to SDS PAGE followed by western blot with FNab08321 (STIM1 Antibody) at dilution of 1:500