

STEAP1 antibody

Product Information

Catalog No.:	FNab08316
Size:	100µg
Form:	liquid
Purification:	Immunogen affinity purified
Purity:	≥95% as determined by SDS-PAGE
Host:	Rabbit
Clonality:	polyclonal
Clone ID:	None
IsoType:	IgG
Storage:	PBS with 0.02% sodium azide and 50% glycerol pH 7.3, -20°C for 12 months(Avoid repeated freeze / thaw cycles.)

Background

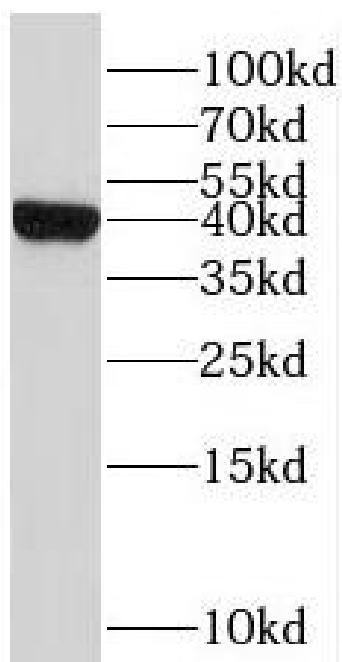
Metalloreductase that has the ability to reduce both Fe(3+) to Fe(2+) and Cu(2+) to Cu(1+). Uses NAD(+) as acceptor(By similarity).

Immunogen information

Immunogen:	six transmembrane epithelial antigen of the prostate 1
Synonyms:	STEAP1 protein Six-transmembrane epithelial antigen of prostate 1 STEAP1 PRSS24 STEAP
Observed MW:	38-40 kDa
Uniprot ID :	Q9UHE8

Application

Reactivity:	Human
Tested Application:	ELISA, WB
Recommended dilution: WB:	1:500-1:2000
Image:	



A431 cells were subjected to SDS PAGE followed by western blot with FNab08316(STEAP1 antibody) at dilution of 1:500