

STMN1 antibody

Product Information

| | |
|---------------|---|
| Catalog No.: | FNab08310 |
| Size: | 100µg |
| Form: | liquid |
| Purification: | Immunogen affinity purified |
| Purity: | ≥95% as determined by SDS-PAGE |
| Host: | Rabbit |
| Clonality: | polyclonal |
| Clone ID: | None |
| IsoType: | IgG |
| Storage: | PBS with 0.02% sodium azide and 50% glycerol pH 7.3, -20°C for 12 months (Avoid repeated freeze / thaw cycles.) |

Background

This gene belongs to the stathmin family of genes. It encodes a ubiquitous cytosolic phosphoprotein proposed to function as an intracellular relay integrating regulatory signals of the cellular environment. The encoded protein is involved in the regulation of the microtubule filament system by destabilizing microtubules. It prevents assembly and promotes disassembly of microtubules. Multiple transcript variants encoding different isoforms have been found for this gene.

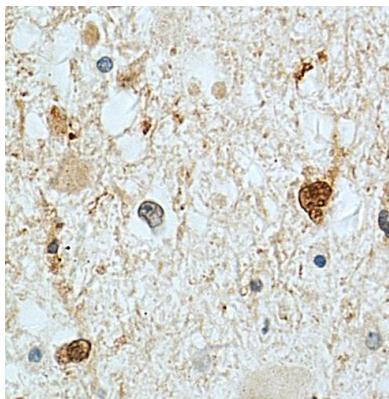
Immunogen information

| | |
|--------------|--|
| Immunogen: | stathmin 1/oncoprotein 18 |
| Synonyms: | Stathmin Leukemia-associated phosphoprotein p18 Metablastin Oncoprotein 18 (Op18) Phosphoprotein p19 (pp19) Prosolin Protein Pr22 pp17 STMN1 C1orf215 LAP18 OP18 |
| Observed MW: | 18 kDa |
| Uniprot ID : | P16949 |

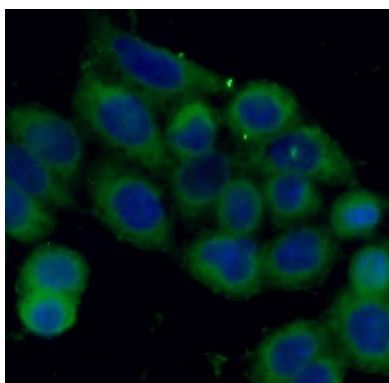
Application

| | |
|-----------------------|---|
| Reactivity: | Human, Mouse |
| Tested Application: | ELISA, WB, IHC, IF |
| Recommended dilution: | WB: 1:500 - 1:2000; IHC: 1:50 - 1:200; IF: 1:50 - 1:100 |

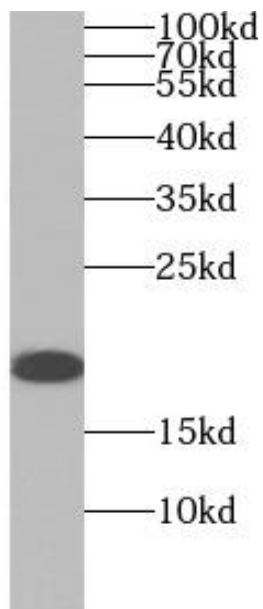
Image:



Immunohistochemistry of paraffin-embedded human gliomas tissue slide using FNab08310(STMN1 Antibody) at dilution of 1:50



Immunofluorescent analysis of HeLa cells using FNab08310(STMN1 Antibody) at dilution of 1:50 and Alexa Fluor 488-conjugated Goat Anti-Rabbit IgG(H+L)



Jurkat cells were subjected to SDS PAGE followed by western blot with FNab08310(STMN1 antibody) at dilution of 1:1000