

SRPX2 antibody

Product Information

Catalog No.:	FNab08240
Size:	100µg
Form:	liquid
Purification:	Immunogen affinity purified
Purity:	≥95% as determined by SDS-PAGE
Host:	Rabbit
Clonality:	polyclonal
Clone ID:	None
IsoType:	IgG
Storage:	PBS with 0.02% sodium azide and 50% glycerol pH 7.3, -20°C for 12 months(Avoid repeated freeze / thaw cycles.)

Background

Acts as a ligand for the urokinase plasminogen activator surface receptor. Plays a role in angiogenesis by inducing endothelial cell migration and the formation of vascular network(cords). Involved in cellular migration and adhesion. Increases the phosphorylation levels of FAK. Interacts with and increases the mitogenic activity of HGF. Promotes synapse formation. May have a role in the perisylvian region, critical for language and cognitive development.

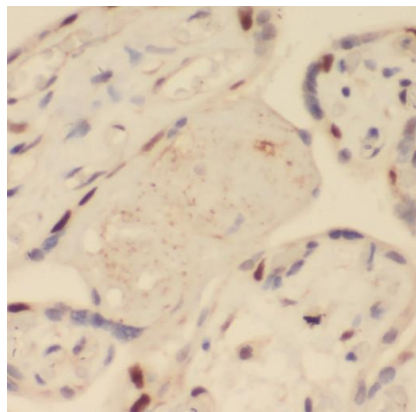
Immunogen information

Immunogen:	sushi-repeat-containing protein, X-linked 2
Synonyms:	Sushi repeat-containing protein SRPX2 Sushi-repeat protein upregulated in leukemia SRPX2 SRPUL
Observed MW:	53 kDa
Uniprot ID :	O60687

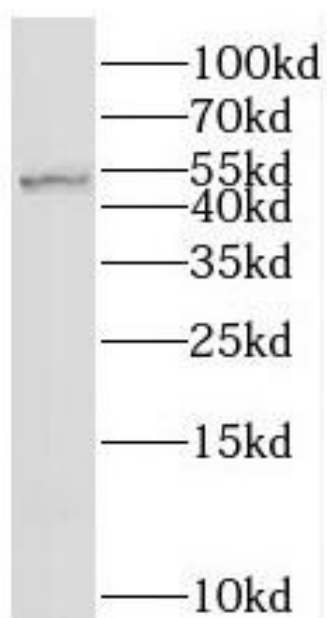
Application

Reactivity:	Human, Mouse, Rat
Tested Application:	ELISA, WB, IHC
Recommended dilution:	WB: 1:500-1:2000; IHC: 1:20-1:200

Image:



Immunohistochemistry of paraffin-embedded human placenta using FNab08240(SRPX2 antibody) at dilution of 1:100



human placenta tissue were subjected to SDS PAGE followed by western blot with FNab08240(SRPX2 antibody) at dilution of 1:500