

SRPRB antibody

Product Information

| | |
|---------------|--|
| Catalog No.: | FNab08239 |
| Size: | 100µg |
| Form: | liquid |
| Purification: | Immunogen affinity purified |
| Purity: | ≥95% as determined by SDS-PAGE |
| Host: | Rabbit |
| Clonality: | polyclonal |
| Clone ID: | None |
| IsoType: | IgG |
| Storage: | PBS with 0.02% sodium azide and 50% glycerol pH 7.3, -20°C for 12 months(Avoid repeated freeze / thaw cycles.) |

Background

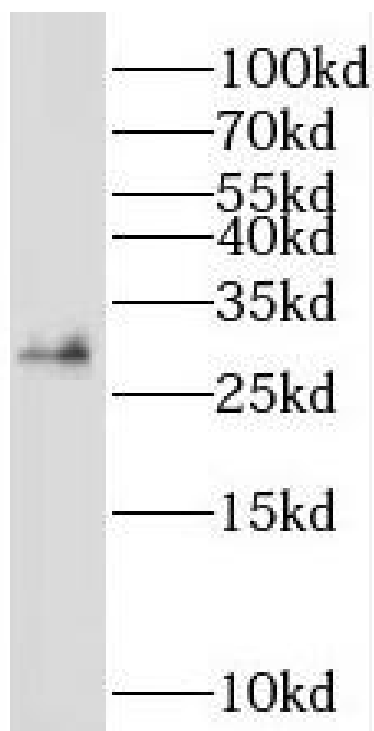
Component of the SRP(signal recognition particle) receptor. Ensures, in conjunction with the signal recognition particle, the correct targeting of the nascent secretory proteins to the endoplasmic reticulum membrane system. Has GTPase activity. May mediate the membrane association of SRPR(By similarity).

Immunogen information

| | |
|--------------|--|
| Immunogen: | signal recognition particle receptor, B subunit |
| Synonyms: | Signal recognition particle receptor subunit beta (SR-beta) Protein APMCF1 SRPRB |
| Observed MW: | 30 kDa |
| Uniprot ID : | Q9Y5M8 |

Application

| | |
|-----------------------|-------------------|
| Reactivity: | Human, Mouse, Rat |
| Tested Application: | ELISA, WB |
| Recommended dilution: | WB: 1:500-1:2000 |
| Image: | |



human liver tissue were subjected to SDS PAGE followed by western blot with FNab08239(SRPRB antibody) at dilution of 1:400