

SRPK1 antibody

Product Information

Catalog No.:	FNab08237
Size:	100µg
Form:	liquid
Purification:	Immunogen affinity purified
Purity:	≥95% as determined by SDS-PAGE
Host:	Rabbit
Clonality:	polyclonal
Clone ID:	None
IsoType:	IgG
Storage:	PBS with 0.02% sodium azide and 50% glycerol pH 7.3, -20°C for 12 months (Avoid repeated freeze / thaw cycles.)

Background

This gene encodes a serine/arginine protein kinase specific for the SR (serine/arginine-rich domain) family of splicing factors. The protein localizes to the nucleus and the cytoplasm. It is thought to play a role in regulation of both constitutive and alternative splicing by regulating intracellular localization of splicing factors. Alternative splicing of this gene results in multiple transcript variants. Additional alternatively spliced transcript variants have been described for this gene, but their full length nature have not been determined.

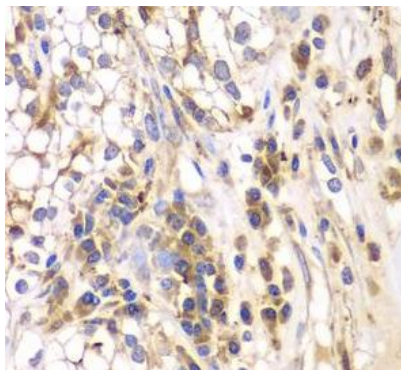
Immunogen information

Immunogen:	SFRS protein kinase 1
Synonyms:	SRSF protein kinase 1 SFRS protein kinase 1 Serine/arginine-rich protein-specific kinase 1 (SR-protein-specific kinase 1) SRPK1
Observed MW:	70 kDa
Uniprot ID :	Q96SB4

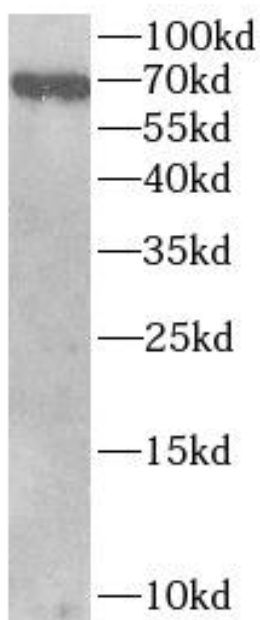
Application

Reactivity:	Human, Mouse, Rat
Tested Application:	ELISA, WB, IHC, IF
Recommended dilution:	WB: 1:500 - 1:2000; IHC: 1:50 - 1:200; IF: 1:10 - 1:100

Image:



Immunohistochemistry of paraffin-embedded human kidney cancer tissue slide using FNab08237(SRPK1 Antibody) at dilution of 1:200



Jurkat cells were subjected to SDS PAGE followed by western blot with FNab08237(SRPK1 antibody) at dilution of 1:1000