

SRGAP1 antibody

Product Information

| | |
|---------------|--|
| Catalog No.: | FNab08224 |
| Size: | 100µg |
| Form: | liquid |
| Purification: | Immunogen affinity purified |
| Purity: | ≥95% as determined by SDS-PAGE |
| Host: | Rabbit |
| Clonality: | polyclonal |
| Clone ID: | None |
| IsoType: | IgG |
| Storage: | PBS with 0.02% sodium azide and 50% glycerol pH 7.3, -20°C for 12 months(Avoid repeated freeze / thaw cycles.) |

Background

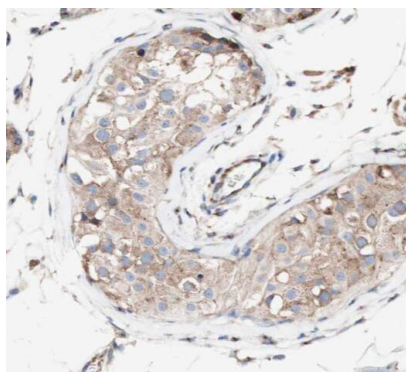
GTPase-activating protein for RhoA and Cdc42 small GTPases. Together with CDC42 seems to be involved in the pathway mediating the repulsive signaling of Robo and Slit proteins in neuronal migration. SLIT2, probably through interaction with ROBO1, increases the interaction of SRGAP1 with ROBO1 and inactivates CDC42.

Immunogen information

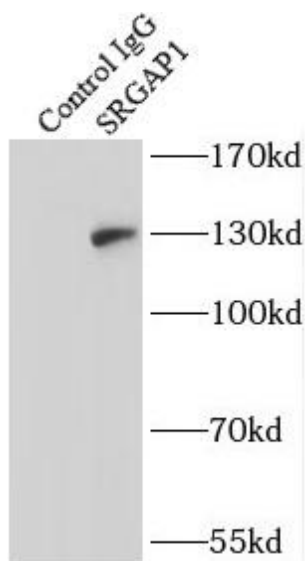
| | |
|--------------|--|
| Immunogen: | SLIT-ROBO Rho GTPase activating protein 1 |
| Synonyms: | SLIT-ROBO Rho GTPase-activating protein 1 (srGAP1) Rho GTPase-activating protein 13 SRGAP1 ARHGAP13 KIAA1304 |
| Observed MW: | 130 kDa |
| Uniprot ID : | Q7Z6B7 |

Application

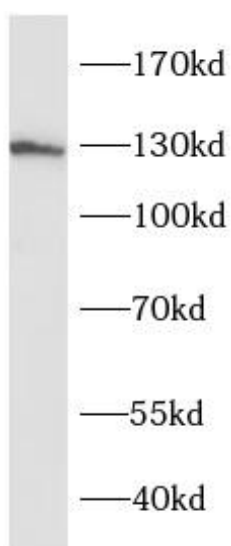
| | |
|-----------------------|---|
| Reactivity: | Human, Mouse, Rat |
| Tested Application: | ELISA, WB, IHC, IP |
| Recommended dilution: | WB: 1:500-1:5000; IP: 1:200-1:2000; IHC: 1:20-1:200 |
| Image: | |



Immunohistochemistry of paraffin-embedded human testis using FNab08224(SRGAP1 antibody) at dilution of 1:50



IP Result of anti-SRGAP1 (IP:FNab08224, 4ug; Detection:FNab08224 1:500) with mouse kidney tissue lysate 4000ug.



mouse brain tissue were subjected to SDS PAGE followed by western blot with FNab08224(SRGAP1 antibody) at dilution of 1:800