

SREBF2 antibody

Product Information

| | |
|---------------|--|
| Catalog No.: | FNab08221 |
| Size: | 100µg |
| Form: | liquid |
| Purification: | Immunogen affinity purified |
| Purity: | ≥95% as determined by SDS-PAGE |
| Host: | Rabbit |
| Clonality: | polyclonal |
| Clone ID: | None |
| IsoType: | IgG |
| Storage: | PBS with 0.02% sodium azide and 50% glycerol pH 7.3, -20°C for 12 months(Avoid repeated freeze / thaw cycles.) |

Background

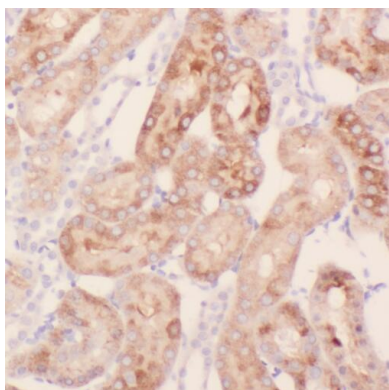
SREBF2, also named as BHLHD2, is a 1141 amino acid protein, which contains 1 bHLH domain and belongs to the SREBP family. SREBF2 localizes in the endoplasmic reticulum membrane and is ubiquitously expressed in adult and fetal tissues. SREBF2 as a transcriptional activator is required for lipid homeostasis. SREBF2 expression is dynamically regulated in response to nutritional and hormonal cues.

Immunogen information

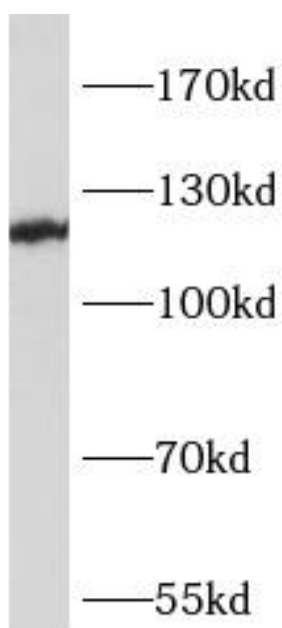
| | |
|--------------|--|
| Immunogen: | sterol regulatory element binding transcription factor 2 |
| Synonyms: | bHLHd2 SREBF2 SREBP 2 SREBP2 |
| Observed MW: | 73-75 kDa, 120-130 kDa |
| Uniprot ID : | Q12772 |

Application

| | |
|-----------------------|-----------------------------------|
| Reactivity: | Human |
| Tested Application: | ELISA, WB, IHC |
| Recommended dilution: | WB: 1:500-1:2000; IHC: 1:50-1:200 |
| Image: | |



Immunohistochemistry of paraffin-embedded human kidney using FNab08221(SREBF2 antibody) at dilution of 1:50



Hela cells were subjected to SDS PAGE followed by western blot with FNab08221(SREBF2 antibody) at dilution of 1:1000