

SPCS2 antibody

Product Information

Catalog No.:	FNab08168
Size:	100µg
Form:	liquid
Purification:	Immunogen affinity purified
Purity:	≥95% as determined by SDS-PAGE
Host:	Rabbit
Clonality:	polyclonal
Clone ID:	None
IsoType:	IgG
Storage:	PBS with 0.02% sodium azide and 50% glycerol pH 7.3, -20°C for 12 months(Avoid repeated freeze / thaw cycles.)

Background

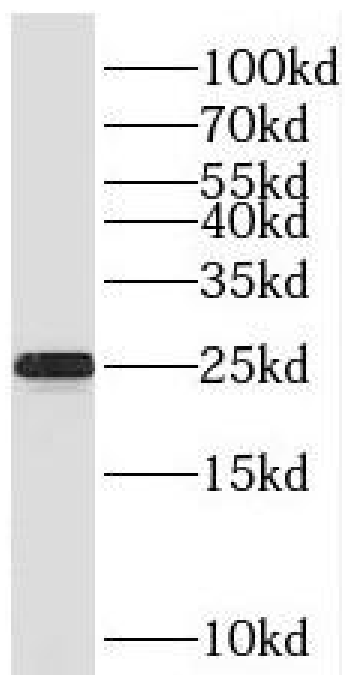
Component of the microsomal signal peptidase complex which removes signal peptides from nascent proteins as they are translocated into the lumen of the endoplasmic reticulum.

Immunogen information

Immunogen:	signal peptidase complex subunit 2 homolog
Synonyms:	Signal peptidase complex subunit 2 Microsomal signal peptidase 25 kDa subunit (SPase 25 kDa subunit) SPCS2 KIAA0102 SPC25
Observed MW:	25 kDa
Uniprot ID :	Q15005

Application

Reactivity:	Human, Mouse, Rat
Tested Application:	ELISA, WB
Recommended dilution: WB:	1:500-1:2000
Image:	



mouse spleen tissue were subjected to SDS PAGE followed by western blot with FNab08168(SPCS2 antibody) at dilution of 1:1000