

SPARCL1 antibody

Product Information

| | |
|---------------|--|
| Catalog No.: | FNab08154 |
| Size: | 100µg |
| Form: | liquid |
| Purification: | Immunogen affinity purified |
| Purity: | ≥95% as determined by SDS-PAGE |
| Host: | Rabbit |
| Clonality: | polyclonal |
| Clone ID: | None |
| IsoType: | IgG |
| Storage: | PBS with 0.02% sodium azide and 50% glycerol pH 7.3, -20°C for 12 months(Avoid repeated freeze / thaw cycles.) |

Background

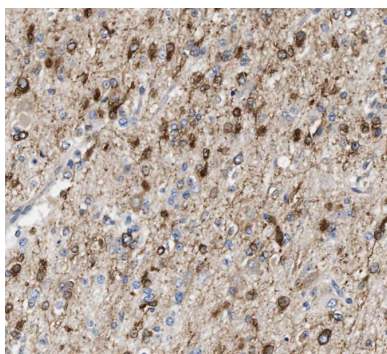
None

Immunogen information

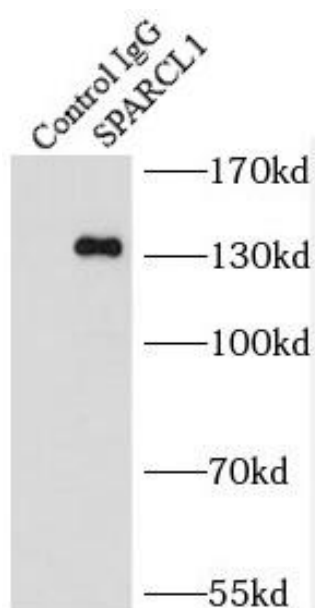
| | |
|--------------|--|
| Immunogen: | SPARC-like 1(hevin) |
| Synonyms: | SPARC-like protein 1 High endothelial venule protein (Hevin) MAST9 SPARCL1 |
| Observed MW: | 130-140 kDa |
| Uniprot ID : | Q14515 |

Application

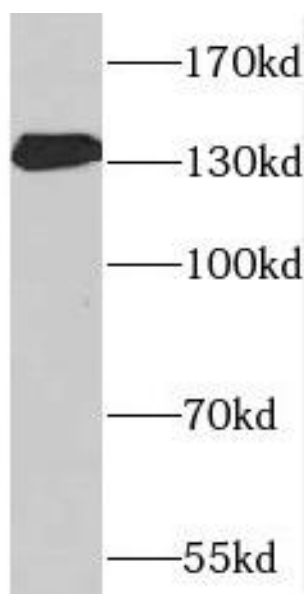
| | |
|-----------------------|---|
| Reactivity: | Human, Mouse, Rat |
| Tested Application: | ELISA, WB, IHC, IP |
| Recommended dilution: | WB: 1:500-1:2000; IP: 1:200-1:1000; IHC: 1:20-1:200 |
| Image: | |



Immunohistochemistry of paraffin-embedded human gliomas tissue slide using FNab08154 (SPARCL1 Antibody) at dilution of 1:50



IP Result of anti-SPARCL1 (IP:FNab08154, 4ug; Detection:FNab08154 1:300) with Raji cells lysate 1440ug.



human heart tissue were subjected to SDS PAGE followed by western blot with FNab08154 (SPARCL1 antibody) at dilution of 1:400