

## SORL1 antibody

### Product Information

Catalog No.:	FNab08116
Size:	100µg
Form:	liquid
Purification:	Immunogen affinity purified
Purity:	≥95% as determined by SDS-PAGE
Host:	Rabbit
Clonality:	polyclonal
Clone ID:	None
IsoType:	IgG
Storage:	PBS with 0.02% sodium azide and 50% glycerol pH 7.3, -20°C for 12 months(Avoid repeated freeze / thaw cycles.)

### Background

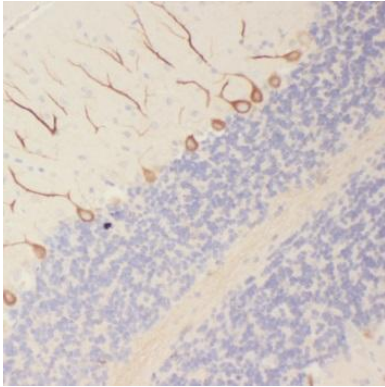
None

### Immunogen information

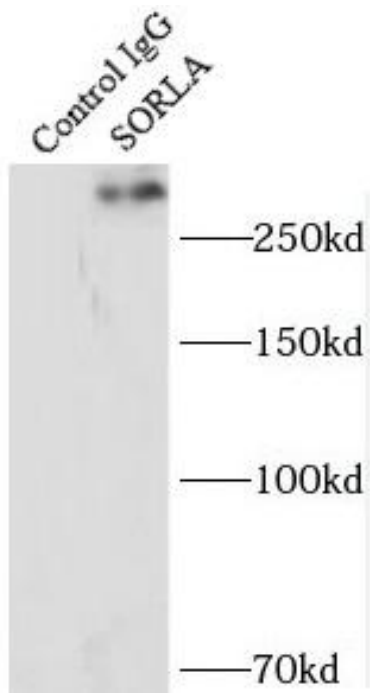
Immunogen:	sortilin-related receptor, L(DLR class) A repeats-containing
Synonyms:	Sortilin-related receptor Low-density lipoprotein receptor relative with 11 ligand-binding repeats (LDLR relative with 11 ligand-binding repeats, LR11) SorLA-1 Sorting protein-related receptor containing LDLR class A repeats (SorLA) SORL1 C11orf32
Observed MW:	None
Uniprot ID :	Q92673

### Application

Reactivity:	Human, Mouse, Rat
Tested Application:	ELISA, IP, IHC
Recommended dilution:	IP: 1:200-1:1000; IHC: 1:20-1:200
Image:	



Immunohistochemistry of paraffin-embedded human brain tissue slide using FNab08116(SORLA antibody) at dilution of 1:50



IP Result of anti-SORLA (IP:FNab08116, 5ug; Detection:FNab08116 1:500) with mouse brain tissue lysate 10000ug.