

## SLC5A5 antibody

### Product Information

Catalog No.:	FNab08107
Size:	100µg
Form:	liquid
Purification:	Immunogen affinity purified
Purity:	≥95% as determined by SDS-PAGE
Host:	Rabbit
Clonality:	polyclonal
Clone ID:	None
IsoType:	IgG
Storage:	PBS with 0.02% sodium azide and 50% glycerol pH 7.3, -20°C for 12 months(Avoid repeated freeze / thaw cycles.)

### Background

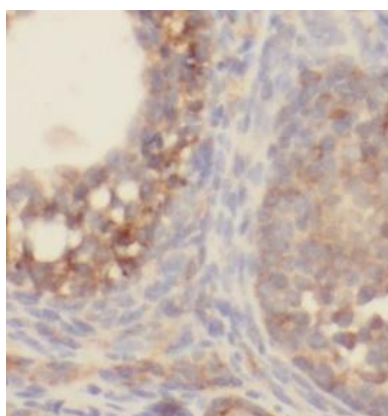
Sodium iodide symporter can be a promising diagnostic and therapeutic tool for thyroid cancer and breast cancer. It has some isoforms, the mature approximately 75-100 kDa protein and a partially glycosylated 50-55 kDa protein.

### Immunogen information

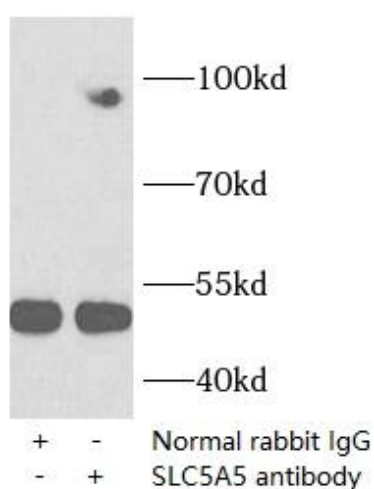
Immunogen:	solute carrier family 5(sodium iodide symporter), member 5
Synonyms:	Sodium/iodide cotransporter (Na <sup>+</sup> )/I <sup>-</sup> cotransporter) Natrium iodide transporter Sodium-iodide symporter (Na <sup>+</sup> )/I <sup>-</sup> symporter) Solute carrier family 5 member 5 SLC5A5 NIS
Observed MW:	70 kDa
Uniprot ID :	Q92911

### Application

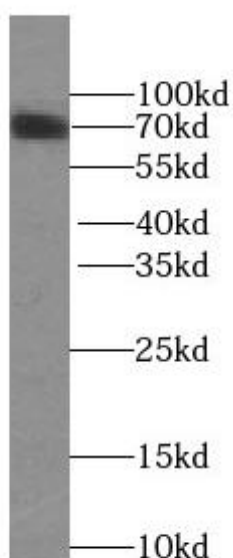
Reactivity:	Human, Mouse, Rat
Tested Application:	ELISA, WB, IP, IHC
Recommended dilution:	WB: 1:500-1:1000; IP: 1:500-1:1000; IHC: 1:20-1:200
Image:	



Immunohistochemistry of paraffin-embedded human thyroid cancer tissue slide using FNab08107(SLC5A5 Antibody) at dilution of 1:50



IP Result of anti-Sodium iodide symporter (IP: FNab08107, 4ug; Detection: FNab08107 1:800) with mouse testis tissue lysate 3000ug.



mouse testis tissue were subjected to SDS PAGE followed by western blot with FNab08107(SLC5A5 Antibody) at dilution of 1:600