

SMPD1 antibody

Product Information

Catalog No.:	FNab08040
Size:	100µg
Form:	liquid
Purification:	Immunogen affinity purified
Purity:	≥95% as determined by SDS-PAGE
Host:	Rabbit
Clonality:	polyclonal
Clone ID:	None
IsoType:	IgG
Storage:	PBS with 0.02% sodium azide and 50% glycerol pH 7.3, -20°C for 12 months(Avoid repeated freeze / thaw cycles.)

Background

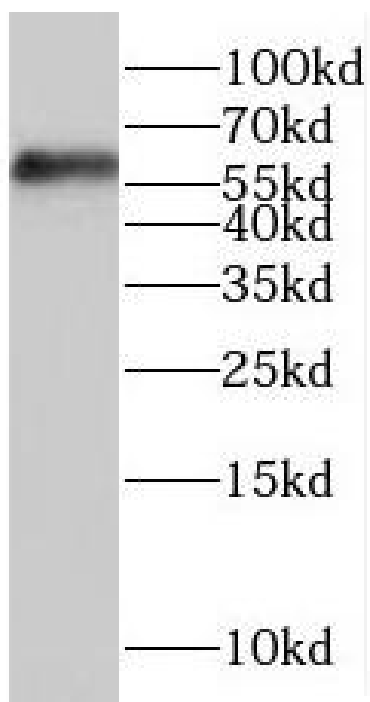
None

Immunogen information

Immunogen:	sphingomyelin phosphodiesterase 1, acid lysosomal
Synonyms:	Sphingomyelin phosphodiesterase Acid sphingomyelinase (aSMase) Sphingomyelin phosphodiesterase, processed form SMPD1 ASM
Observed MW:	60 kDa
Uniprot ID :	P17405

Application

Reactivity:	Human, Mouse, Rat
Tested Application:	ELISA, WB
Recommended dilution: WB:	1:500-1:2000
Image:	



mouse cerebellum tissue were subjected to SDS PAGE followed by western blot with FNab08040(SMPD1,ASM Antibody) at dilution of 1:300