

ACTA2 antibody

Product Information

Catalog No.:	FNab08038
Size:	100µg
Form:	liquid
Purification:	Immunogen affinity purified
Purity:	≥95% as determined by SDS-PAGE
Host:	Rabbit
Clonality:	polyclonal
Clone ID:	None
IsoType:	IgG
Storage:	PBS with 0.02% sodium azide and 50% glycerol pH 7.3, -20°C for 12 months(Avoid repeated freeze / thaw cycles.)

Background

ACTA2, also named as a-SMA,AAT6;ACTSA belongs to the actin family. Actins are highly conserved proteins that are involved in various types of cell motility and are ubiquitously expressed in all eukaryotic cells. Defects in ACTA2 are the cause of aortic aneurysm familial thoracic type 6(AAT6). The immunogen of this antibody is a specific domain of ACTA2. This antibody stains the aorta only.

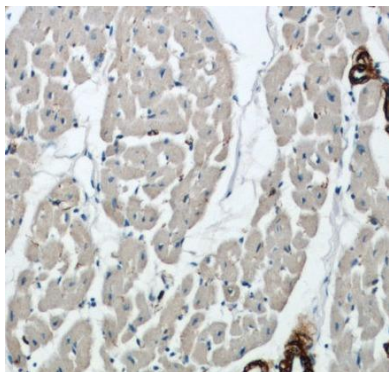
Immunogen information

Immunogen:	actin, alpha 2, smooth muscle, aorta
Synonyms:	Actin, aortic smooth muscle Alpha-actin-2 Cell growth-inhibiting gene 46 protein Actin, aortic smooth muscle, intermediate form ACTA2 ACTSA ACTVS
Observed MW:	42 kDa
Uniprot ID :	P62736

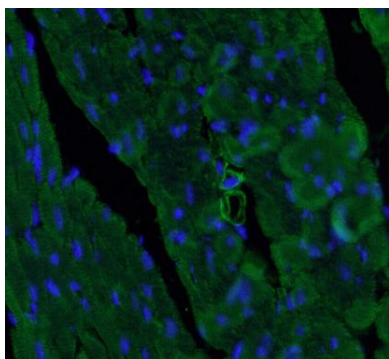
Application

Reactivity:	Human, Mouse, Rat
Tested Application:	ELISA, IHC, WB, IF
Recommended dilution:	WB: 1:500-1:2000; IHC: 1:20-1:200; IF: 1:20-1:200

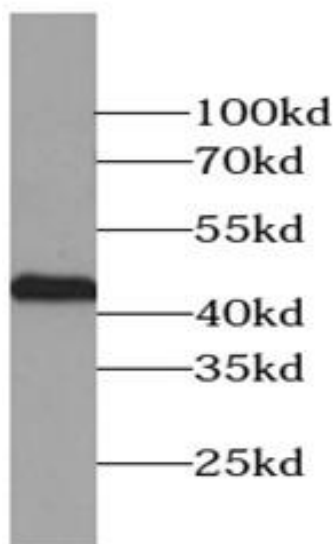
Image:



Immunohistochemistry of paraffin-embedded human heart using FNab08038(ACTA2-Specific antibody) at dilution of 1:1000



Immunofluorescent analysis of (4% PFA) fixed mouse heart tissue using FNab08038 (ACTA2 Antibody) at dilution of 1:50 and Alexa Fluor 488-conjugated AffiniPure Goat Anti-Rabbit IgG(H+L)



mouse colon tissue were subjected to SDS PAGE followed by western blot with FNab08038(a-SMA specific Antibody) at dilution of 1:600