

SMARCE1 antibody

Product Information

Catalog No.:	FNab08014
Size:	100µg
Form:	liquid
Purification:	Immunogen affinity purified
Purity:	≥95% as determined by SDS-PAGE
Host:	Rabbit
Clonality:	polyclonal
Clone ID:	None
IsoType:	IgG
Storage:	PBS with 0.02% sodium azide and 50% glycerol pH 7.3, -20°C for 12 months (Avoid repeated freeze / thaw cycles.)

Background

The protein encoded by this gene is part of the large ATP-dependent chromatin remodeling complex SWI/SNF, which is required for transcriptional activation of genes normally repressed by chromatin. The encoded protein, either alone or when in the SWI/SNF complex, can bind to 4-way junction DNA, which is thought to mimic the topology of DNA as it enters or exits the nucleosome. The protein contains a DNA-binding HMG domain, but disruption of this domain does not abolish the DNA-binding or nucleosome-displacement activities of the SWI/SNF complex. Unlike most of the SWI/SNF complex proteins, this protein has no yeast counterpart.

Immunogen information

Immunogen:	SWI/SNF related, matrix associated, actin dependent regulator of chromatin, subfamily e, member 1
Synonyms:	SWI/SNF-related matrix-associated actin-dependent regulator of chromatin subfamily E member 1 BRG1-associated factor 57 (BAF57) SMARCE1 BAF57
Observed MW:	54 kDa
Uniprot ID :	Q969G3

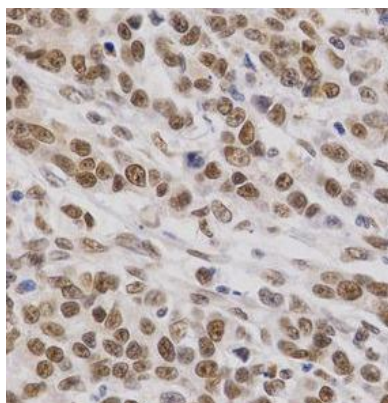
Application

Reactivity:	Human, Mouse
-------------	--------------

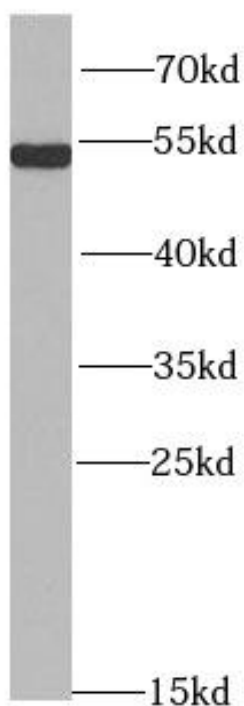
Tested Application: ELISA, WB, IHC, IF

Recommended dilution: WB: 1:500 - 1:2000; IHC: 1:50 - 1:200; IF: 1:50 - 1:200

Image:



Immunohistochemistry of paraffin-embedded human gastric cancer using FNab08014(SMARCE1 antibody) at dilution of 1:100



Jurkat cells were subjected to SDS PAGE followed by western blot with FNab08014(SMARCE1 antibody) at dilution of 1:1000